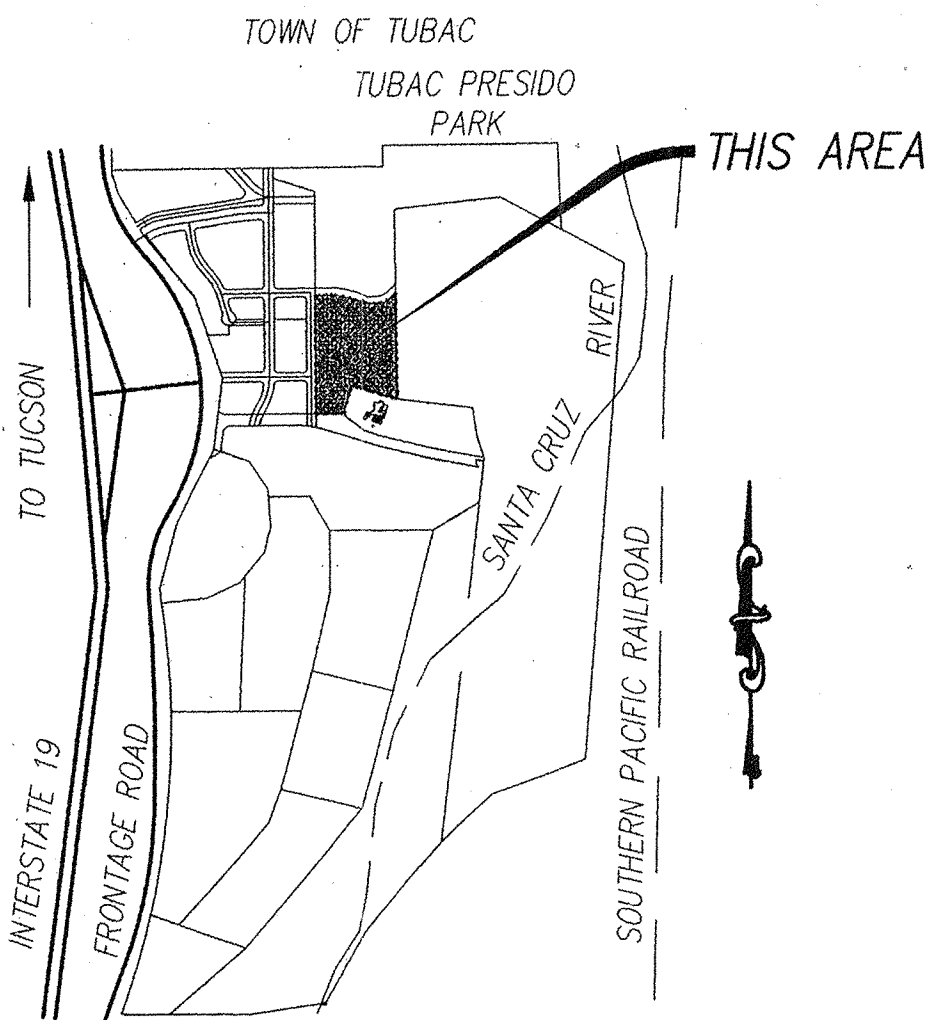
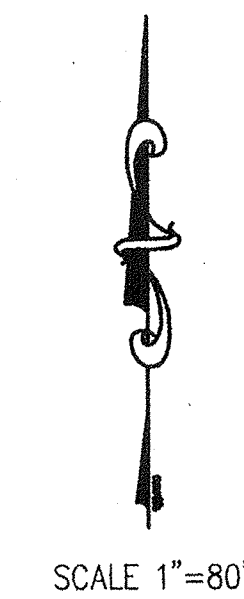
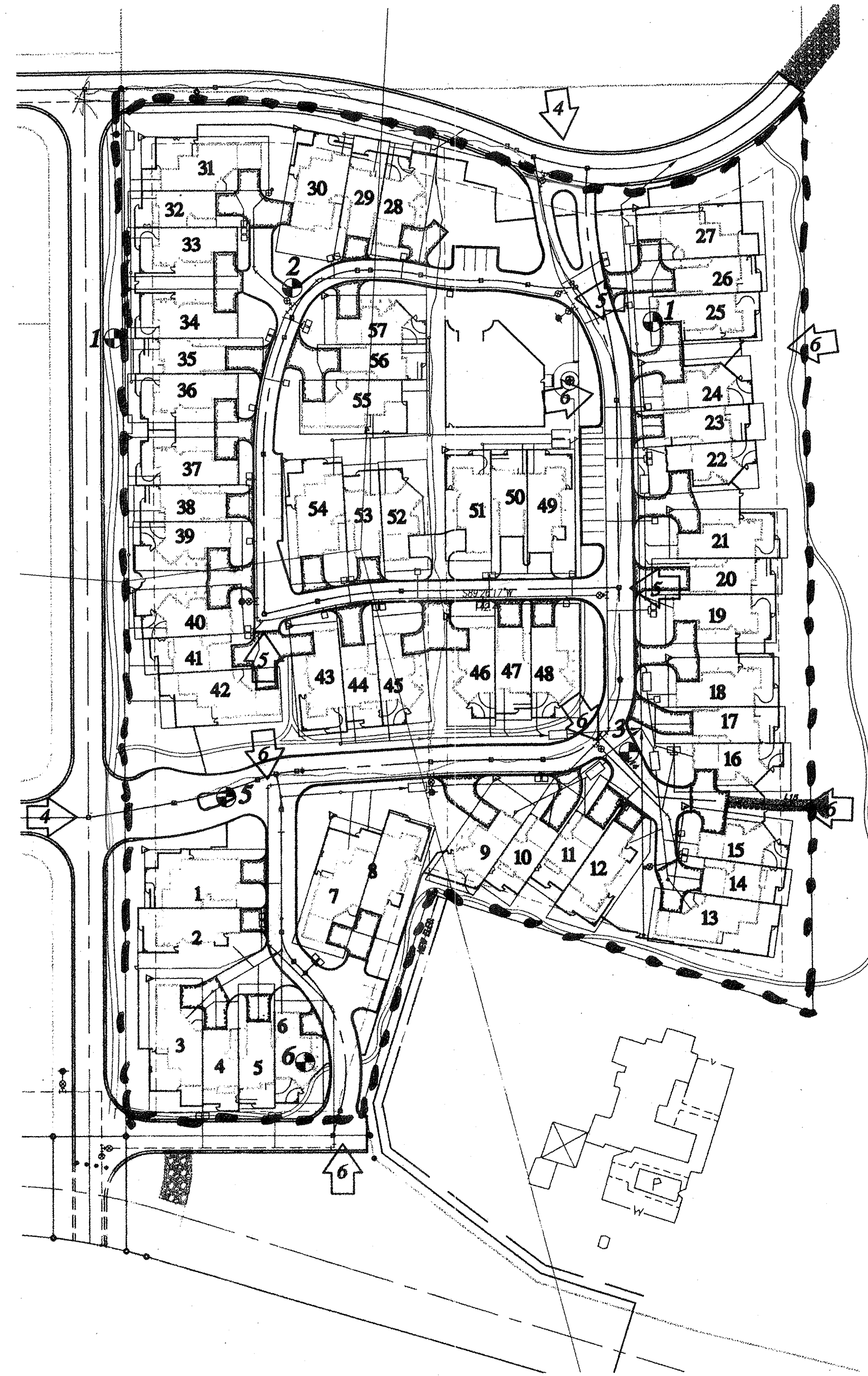


# CIELITO LINDO DE TUBAC LOTS 1-57 PRIVATE PAVING, GRADING, DRAINAGE, SEWER & WATER PLANS



**LOCATION PLAN**  
A PORTION OF BACA FLOAT NO. 3  
SANTA CRUZ COUNTY, ARIZONA



### PAVING NOTES

1. THE BASIS OF BEARING: ADOT MONUMENTS AT STATIONS 770' RIGHT OF S.B. CENTERLINE 1150+00 AND 490' RIGHT OF S.B. CENTERLINE 1150+60, PROJECT No. 1-19-1(28), DRAWING No. D-12-T-325, SHEET 9 OF 26, BEARING = N39°55'53"W.
2. THE BASIS OF ELEVATION: ADOT MONUMENT AT STATION 1145+00 S.B. CENTERLINE, PROJECT No. 1-19-1(28), SAID MONUMENT LOCATED 35± SOUTHEASTERLY FROM THE SOUTHWEST CORNER OF BLOCK 5 SHOWN HEREON, SAID ELEVATION BEING 3217.00.
3. THE DESIGN SPEED FOR THESE STREETS IS 25 MPH. THE DESIGN VEHICLE IS WB-40.
4. ALL CONSTRUCTION & TEST METHODS SHALL BE IN CONFORMANCE WITH SANTA CRUZ COUNTY STANDARD SPECIFICATIONS.
5. AGGREGATE BASE COURSE SHALL CONFORM TO MAG SPECIFICATIONS, SECTION 310.
6. ASPHALTIC CONCRETE SHALL CONFORM TO MAG SPECIFICATIONS, SECTION 321, MIX #2 SPECIFICATIONS.
7. ALL CONCRETE SHALL CONFORM TO MAG SPECIFICATIONS, SECTION 340, CLASS B.
8. ALL EARTHWORK SHALL CONFORM TO MAG SPECIFICATIONS, SECTION 201.
9. CONTRACTOR SHALL COMPLY WITH ALL APPLICABLE OCCUPATIONAL SAFETY AND HEALTH ADMINISTRATION REGULATIONS.
10. CONTRACTOR SHALL OBTAIN ALL PERMITS REQUIRED BY GOVERNMENTAL AGENCIES.
11. ALL REVISIONS TO THESE PLANS MUST BE APPROVED BY SANTA CRUZ CO. PRIOR TO CONSTRUCTION.
12. A COPY OF THIS PLAN SHALL BE KEPT IN AN EASILY ACCESSIBLE LOCATION ON THE SITE AT ALL TIMES.
13. IF UNANTICIPATED CONDITIONS ARE ENCOUNTERED DURING THE COURSE OF CONSTRUCTION AND ARE BEYOND THE SCOPE OF THE DESIGN, THE ENGINEER SHALL SUBMIT THE NECESSARY REVISED OR SUPPLEMENTAL IMPROVEMENT PLANS FOR REVIEW AND APPROVAL BY THE COUNTY ENGINEER.
14. UPON COMMENCEMENT OF WORK, TRAFFIC CONTROL DEVICES SHALL BE POSTED AND MAINTAINED BY THE CONTRACTOR UNTIL SUCH TIME AS THE WORK IS COMPLETED. ALL WARNING SIGNS, BARRICADES, ETC. SHALL BE IN ACCORDANCE WITH THE MANUAL OF UNIFORM TRAFFIC CONTROL DEVICES ADOPTED BY THE STATE OF ARIZONA PURSUANT TO A.R.S. 28-650.
15. A QUALIFIED REGISTERED ENGINEER AND LAND SURVEYOR MUST CERTIFY THAT THIS PROJECT WAS CONSTRUCTED IN SUBSTANTIAL CONFORMANCE WITH THE APPROVED PLANS PRIOR TO REQUEST FOR FINAL INSPECTION/CERTIFICATE OF OCCUPANCY OR THE RELEASE OF ASSURANCES.

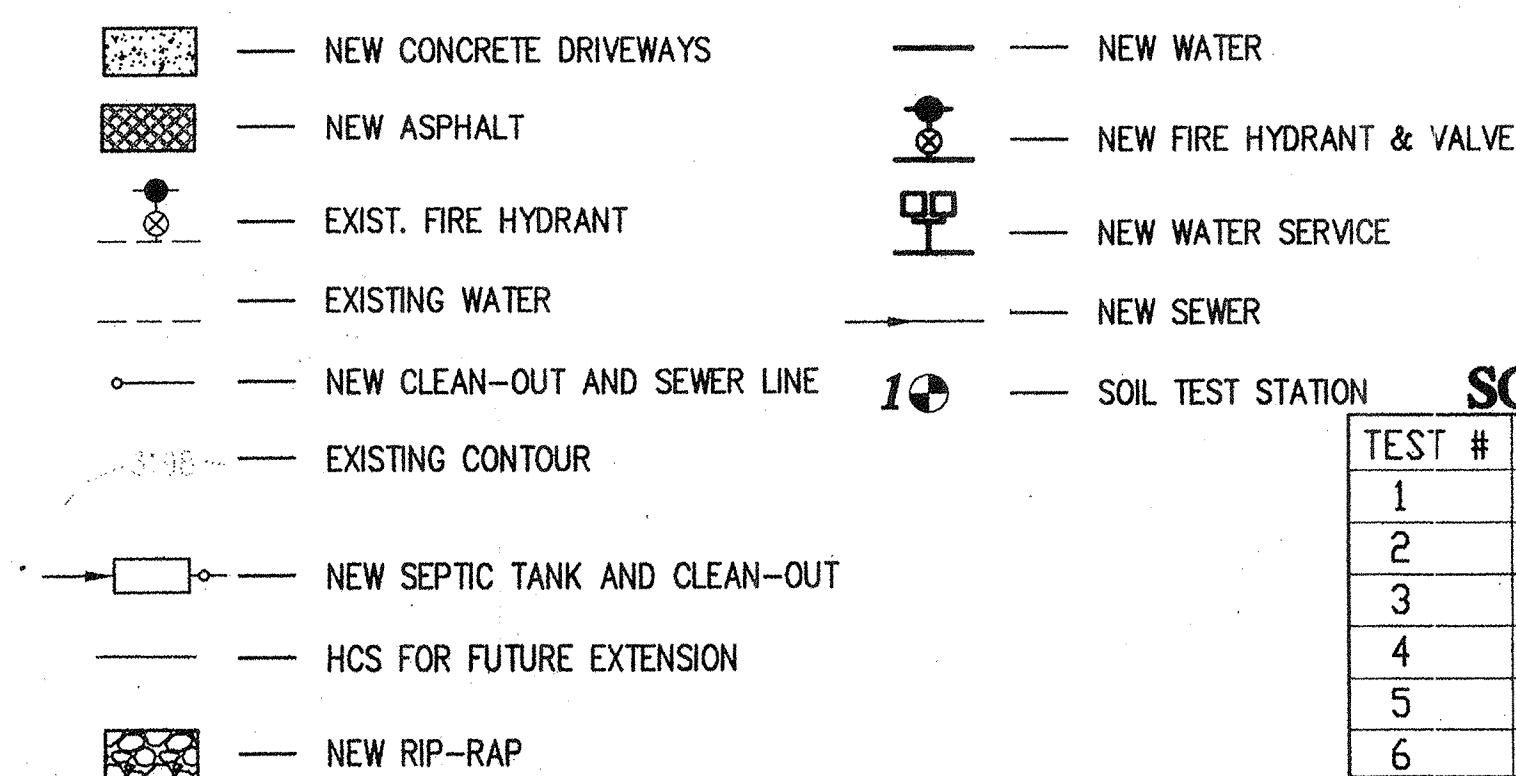
### WATER NOTES

1. ALL DESIGN STANDARDS, MATERIALS AND WORKMANSHIP ARE TO BE IN ACCORDANCE WITH CITY OF TUCSON WATER STANDARD WATERWORKS SPECIFICATIONS AND DETAILS. TUCSON WATER STANDARD DETAIL 104, "GENERAL CONTRACT NOTES" SHALL APPLY TO AND BECOME AN INTEGRAL PART OF THIS PROJECT. TUCSON WATER STANDARDS SHALL BE COINCIDENTAL WITH BACA FLOAT WATER CO. STANDARDS UNLESS OTHERWISE REVISED BY THE ENGINEER.

### SEWER NOTES

1. ALL DESIGN STANDARDS, MATERIALS AND WORKMANSHIP FOR SEWERS ARE TO BE IN ACCORDANCE WITH THE ADEQ MANUAL #11.
2. THE HORIZONTAL DISTANCE BETWEEN A PUBLIC WATER PIPE AND A SEWER MAIN, SHALL NOT BE LESS THAN SIX (6) FEET. VERTICAL CLEARANCE BETWEEN WATER AND SEWER LINE SHALL BE A MINIMUM OF 24 INCHES.
3. SEWER CONTRACTOR SHALL INSTALL ALL FRAMES AND COVERS FOR MANHOLES TO THE ELEVATIONS STAKED BY THE ENGINEER.
4. PAVING CONTRACTOR SHALL ADJUST, PRIOR TO PAVING, MANHOLE FRAMES AND COVERS TO FINAL PAVEMENT SURFACE GRADE.
5. CONCRETE FOR SEWER MANHOLES SHALL BE CLASS "B".
6. PVC PIPE USED FOR THIS PROJECT SHALL BE TYPE A.S.T.M. 39\034-SDR 35 A.S.T.M. TEST D-2241.
7. INCREASE BEDDING TYPE AT ALL MH'S TO THE FIRST JOINT OUT OF OPEN TRENCH CONDITION.
8. BACA FLOAT SEWER CO. STANDARDS SHALL BE COINCIDENTAL WITH PIMA COUNTY WASTEWATER MANAGEMENT STANDARDS UNLESS OTHERWISE REVISED BY THE ENGINEER.

### LEGEND



### SOILS DATA

| TEST # | L. L. | P. I. | PASS 200 |
|--------|-------|-------|----------|
| 1      | 34    | 17    | 46.9     |
| 2      |       | NP    | 31       |
| 3      |       | NP    | 27       |
| 4      |       | -     | -        |
| 5      |       | -     | -        |
| 6      |       | NP    | 22       |

### SHEET INDEX

- 1 COVER
- 2 DETAILS
- 3 SITE GRADING PLAN
- 4-6 GRADING, PAVING & DRAINAGE PLANS
- 7 SEWER PLAN
- 8 WATER PLAN

### APPROVALS

• PAVING & DRAINAGEWAY

|                |      |
|----------------|------|
| SANTA CRUZ CO. | DATE |
|----------------|------|

• WATER SYSTEM

|                      |         |
|----------------------|---------|
|                      | 8/15/97 |
| BACA FLOAT WATER CO. | DATE    |

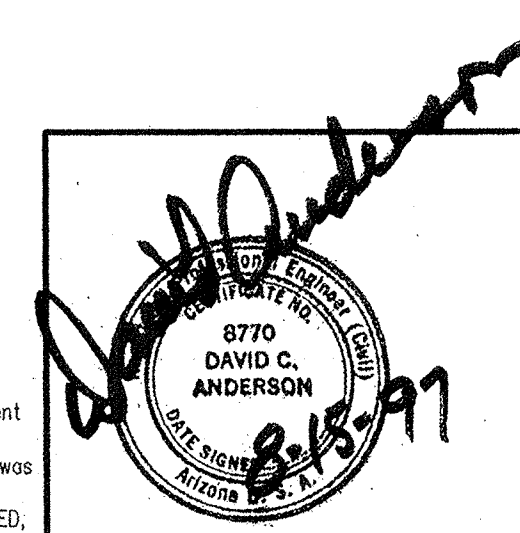
• SEWER SYSTEM

|                      |         |
|----------------------|---------|
|                      | 8/15/97 |
| BACA FLOAT SEWER CO. | DATE    |



DEVELOPER  
BACA FLOAT DEVELOPMENT CO.  
P.O. BOX 4241  
TUBAC, ARIZONA 85640  
1-520-398-2506  
ATTN: ROY ROSS

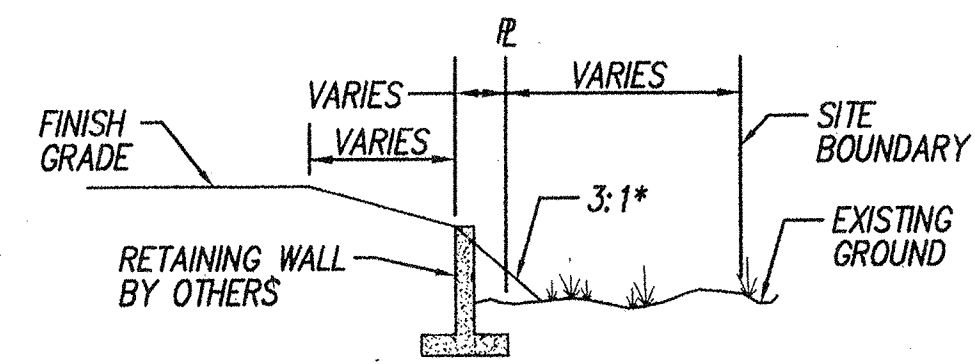
792-2211



|  |     |               |
|--|-----|---------------|
| <b>CIELITO LINDO DE TUBAC<br/>LOTS 1-57<br/>PRIVATE PAVING, GRADING, DRAINAGE,<br/>SEWER &amp; WATER PLANS</b> |     | 1             |
| <b>RS Engineering</b><br>Consulting Engineers  |     | DATE: 8/13/97 |
| 595 SOUTH MEYER AVENUE, TUCSON, ARIZONA 85701 (520) 791-3933   | DCA | PROJ: 9424    |
|  | DCA | SHT:          |

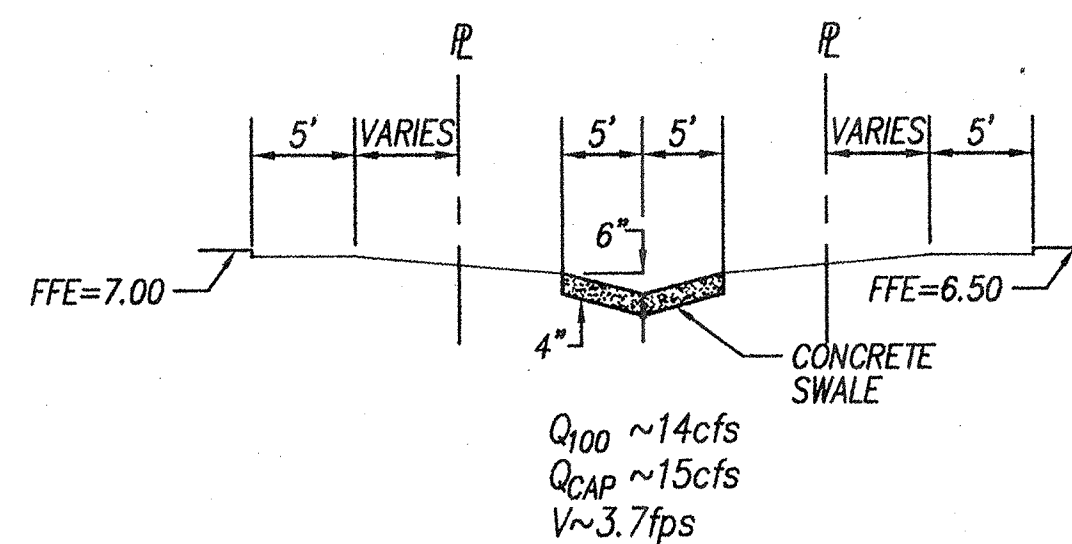
Use or alteration of the information in this instrument for other than the specific purpose for which it was intended and for other than the client for whom it was prepared is forbidden unless expressly permitted in writing in advance by R.S. ENGINEERING INCORPORATED, and R.S. ENGINEERING INCORPORATED shall have no liability to any use of this information without their written consent. © RS ENGINEERING

\\rs\c-sht1-2.dwg Rev Aug 13 15:07:43 1997 RS ENGINEERING

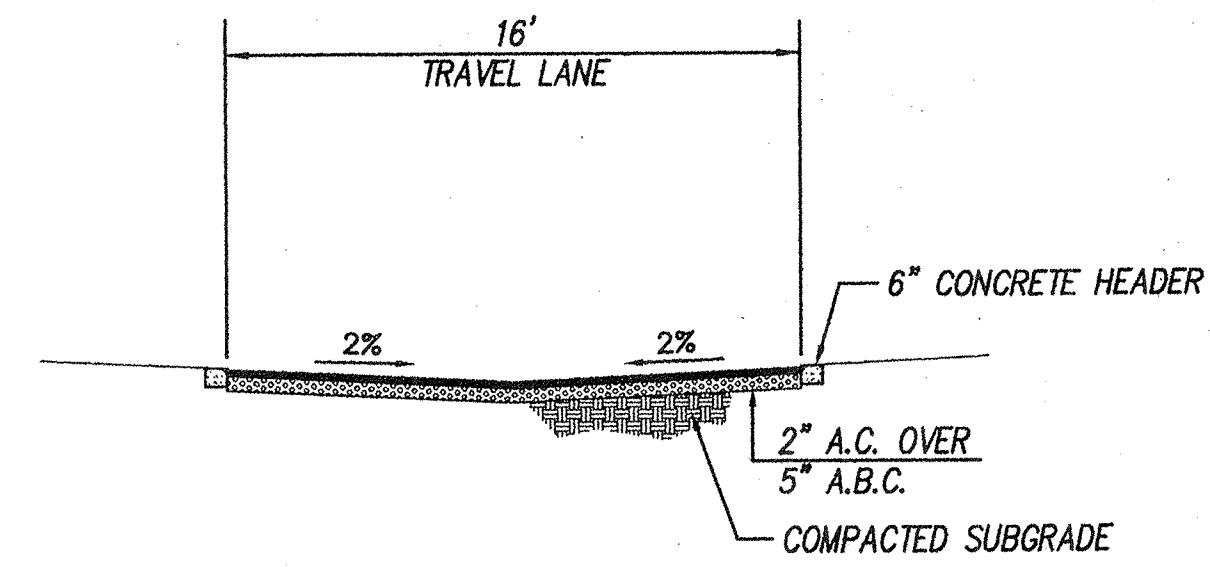


\*NOTE:  
REAR OF LOT MAY BE CONTROLLED BY A RETAINING WALL (BY OTHERS) OR BY A 3:1 EARTH SLOPE. DEVELOPER TO DETERMINE WHICH METHOD TO BE USED BASED ON EXISTING VEGETATION.

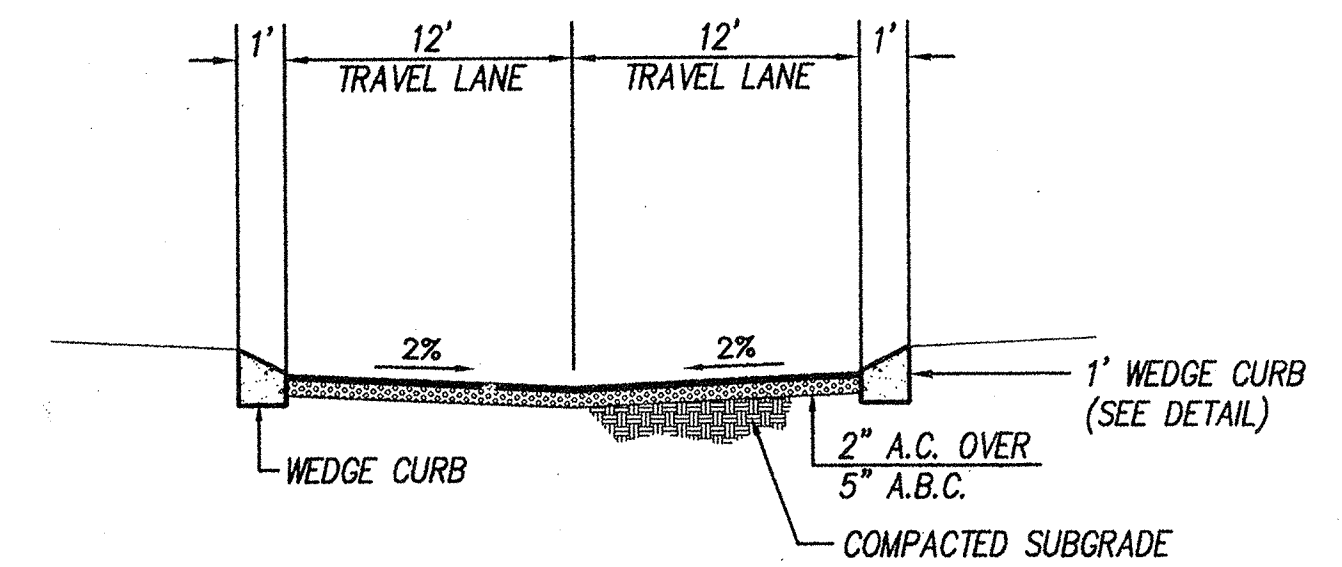
SECTION A  
NTS



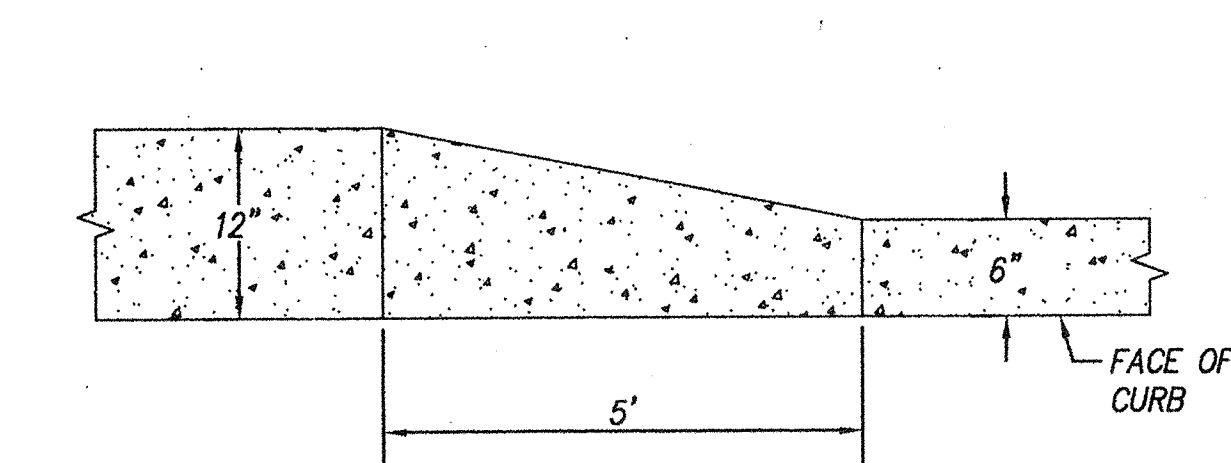
SECTION B  
NTS



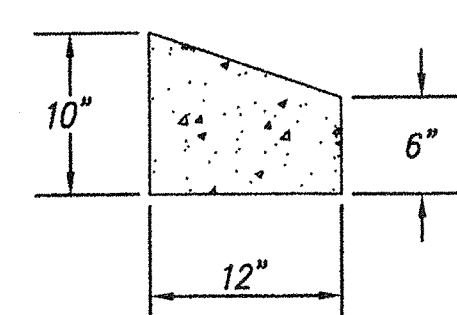
SECTION C  
CROSS SECTION W/6" CONCRETE HEADER  
NTS



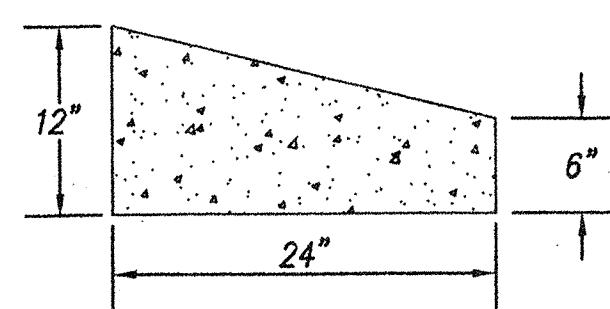
SECTION D  
CROSS SECTION W/1' WEDGE CURB  
NTS



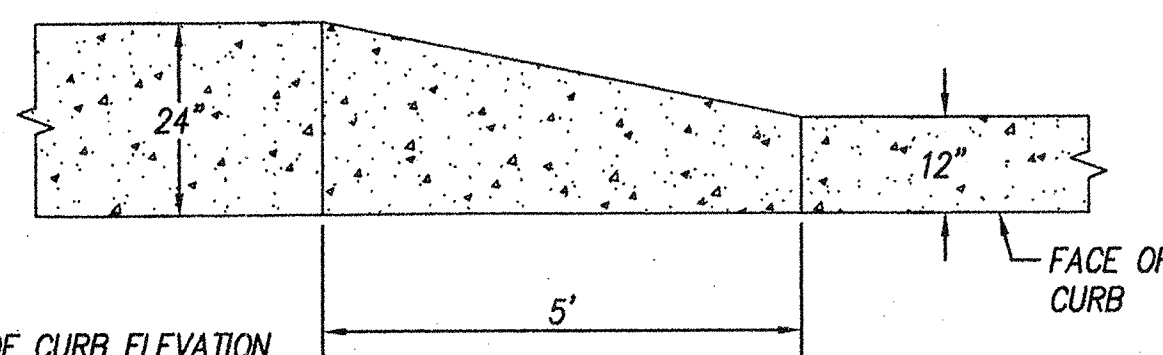
TRANSITION FROM  
MINI WEDGE CURB TO 6" CONCRETE HEADER



1' MINI-WEDGE CURB

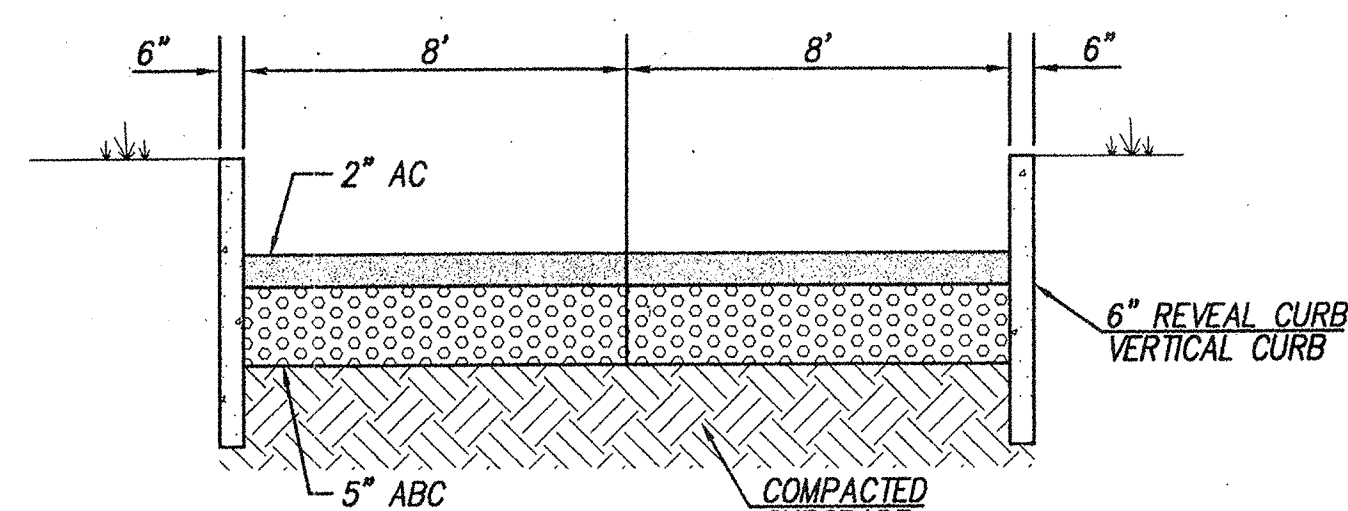


WEDGE CURB

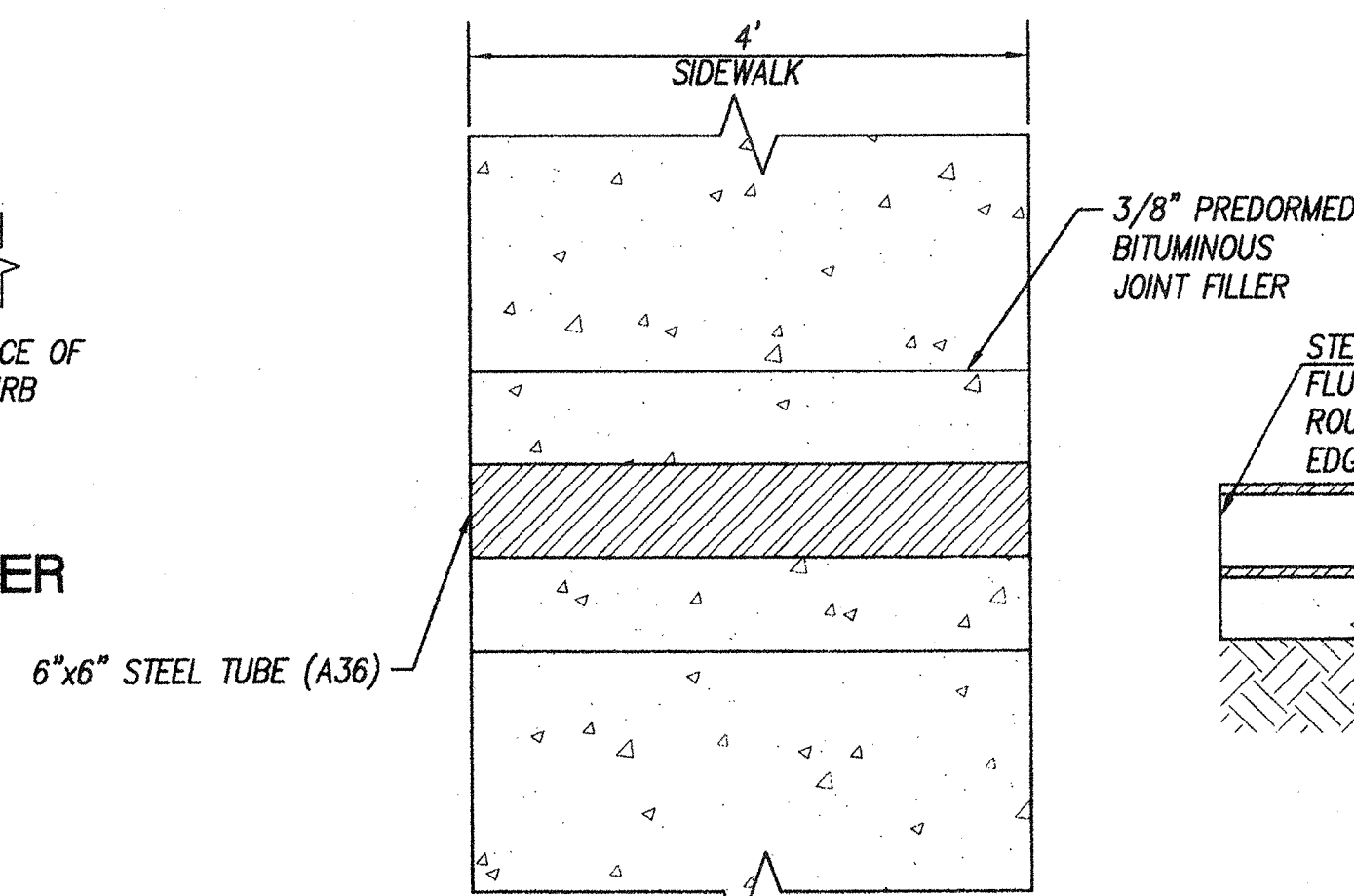


PLAN VIEW  
24' TO 12' WEDGE CURB TRANSITION

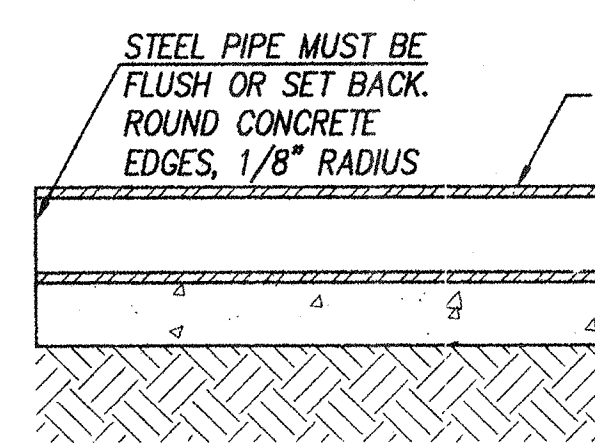
NOTE:  
MAKE TOP OF CURB ELEVATION TRANSITION IN THE SAME 5' AS FOR HORIZONTAL CHANGE.  
MAKE TRANSITION FROM 12" WEDGE CURB TO 6" VERTICAL CURB IN THE SAME 5'.



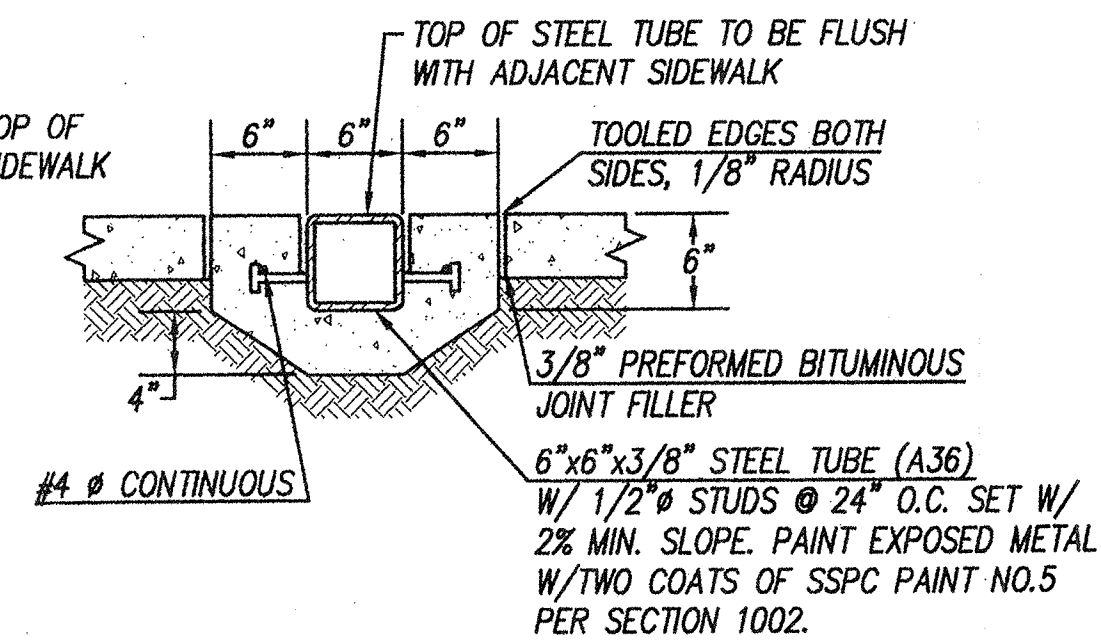
SECTION C-C  
NTS



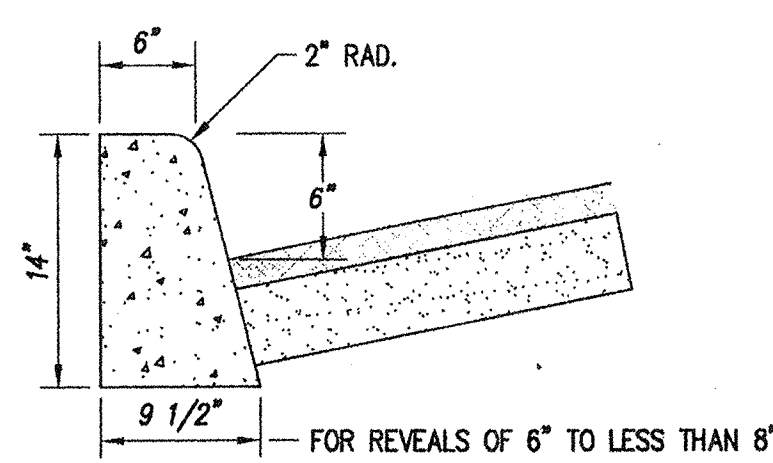
SIDEWALK SCUPPER  
NTS



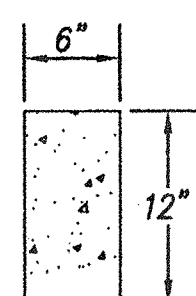
SIDEWALK SCUPPER  
SECTION  
NTS



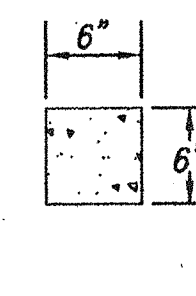
SIDEWALK SCUPPER  
SECTION  
NTS



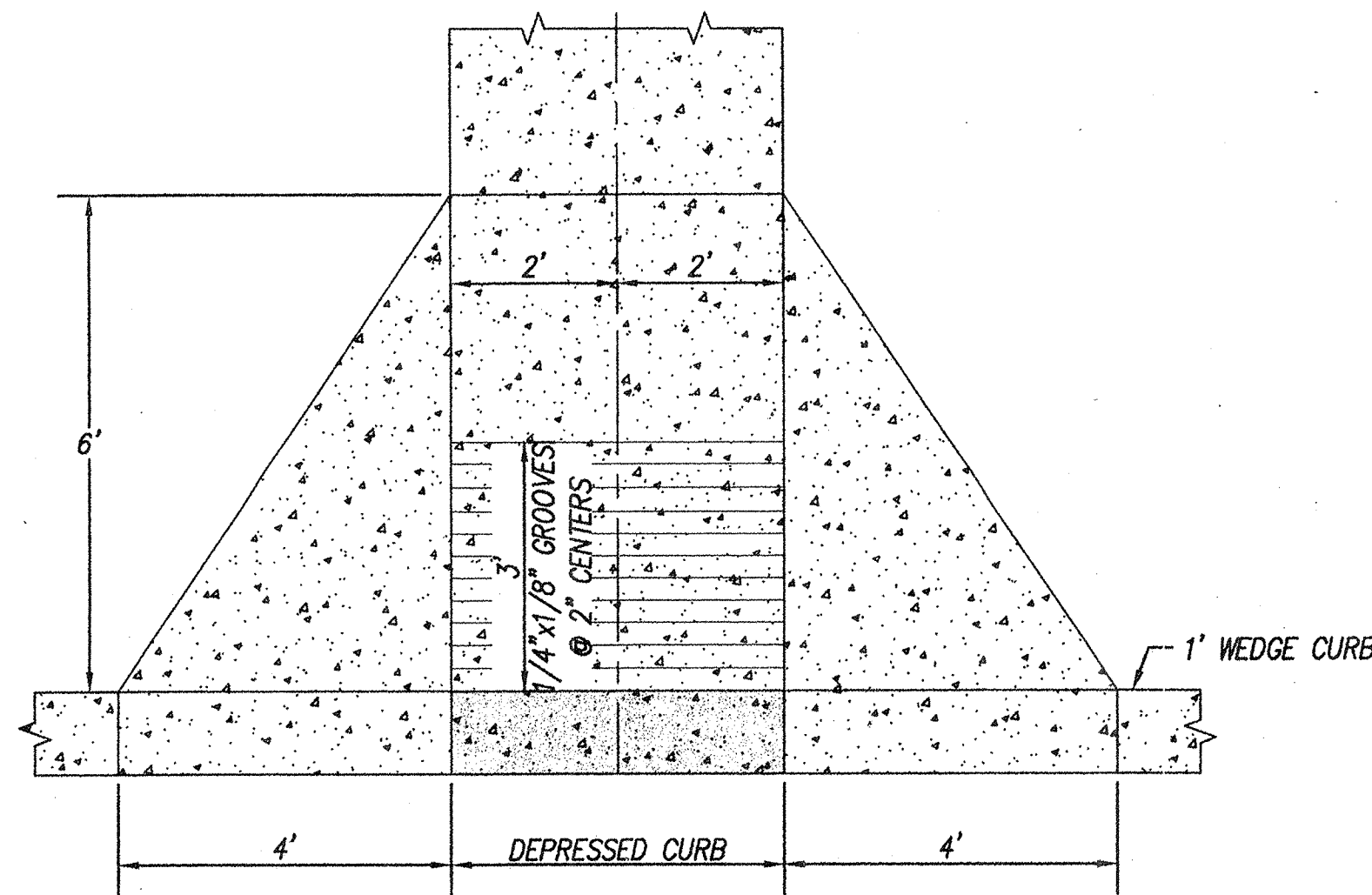
CONCRETE VERTICAL CURB  
1" = 1'



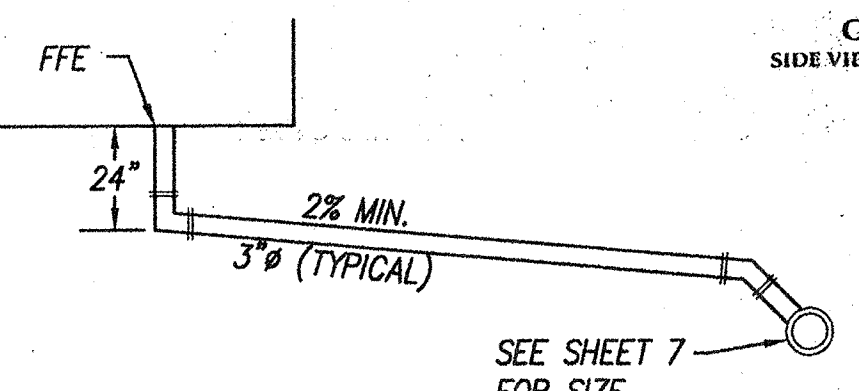
CONCRETE HEADER  
1" = 1'



6" x 6" CONCRETE HEADER  
1" = 1'



PLAN VIEW  
HANDICAP RAMP WITH 1' WEDGE CURB  
1" = 2'

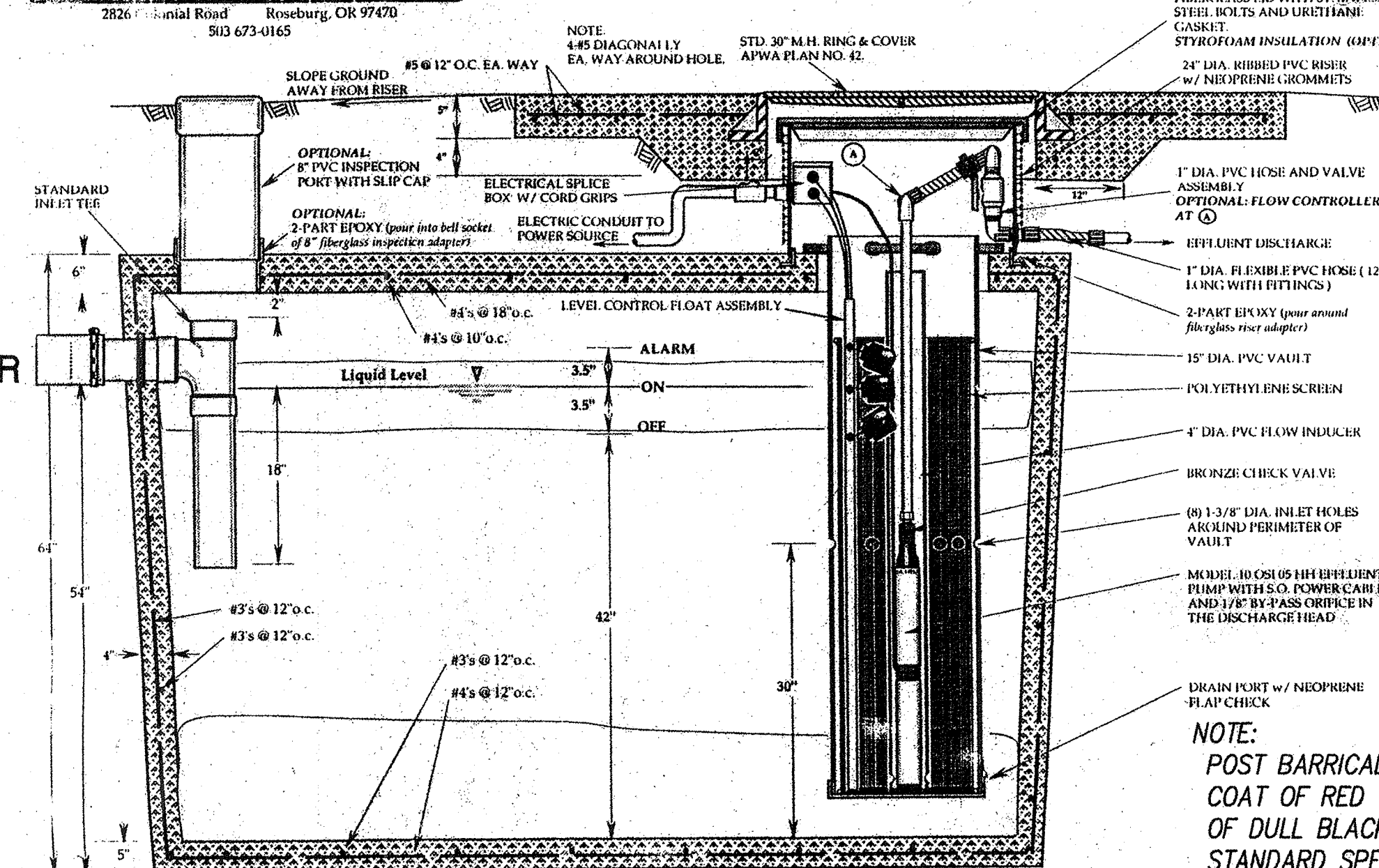


HCS TO COLLECTOR DETAIL  
NTS

NOTE:  
PUMPS, SCREENS, ELECTRIC EQUIPMENT, ETC., NEEDED TO MAKE THIS SEPTIC SYSTEM FUNCTIONAL SHALL BE FROM ORENCO SYSTEMS, INC. OR APPROVED EQUAL.

ORENCO SYSTEMS, INC.  
2826 Central Road  
Roseburg, OR 97470  
503 673-0165

INTERCEPTOR TANK H-20 LOAD

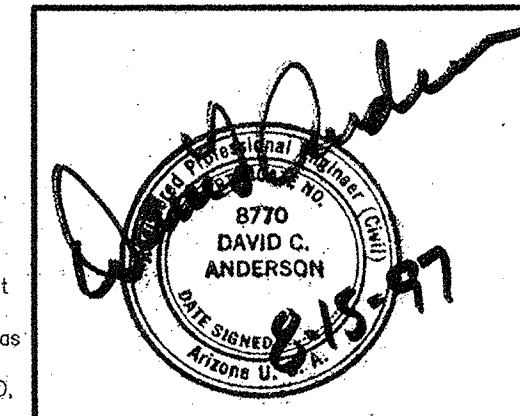


GALLON TANK WITH EFFLUENT PUMP SYSTEM  
SIDE VIEW TYPICAL TANK w/ STEP PUMPING ASSEMBLY

NOTE:  
POST BARRICADE SHALL BE PAINTED WITH ONE PRIME COAT OF RED OXIDE (PAINT NO.1) AND ONE FINISH COAT OF DULL BLACK ENAMEL PER SECTION 1002 OF THE STANDARD SPECIFICATION STRIPES SHALL BE 4" BANDS OF YELLOW REFLECTORIZED TAPE UNLESS OTHERWISE SPECIFIED ON THE PLANS.

POST BARRICADE  
CONCRETE FILLED  
1" = 1'

792-2211



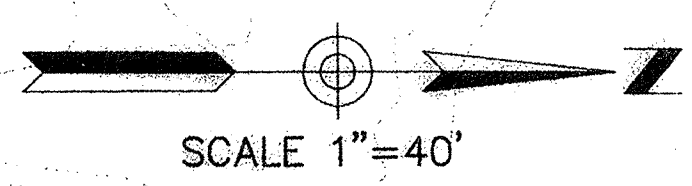
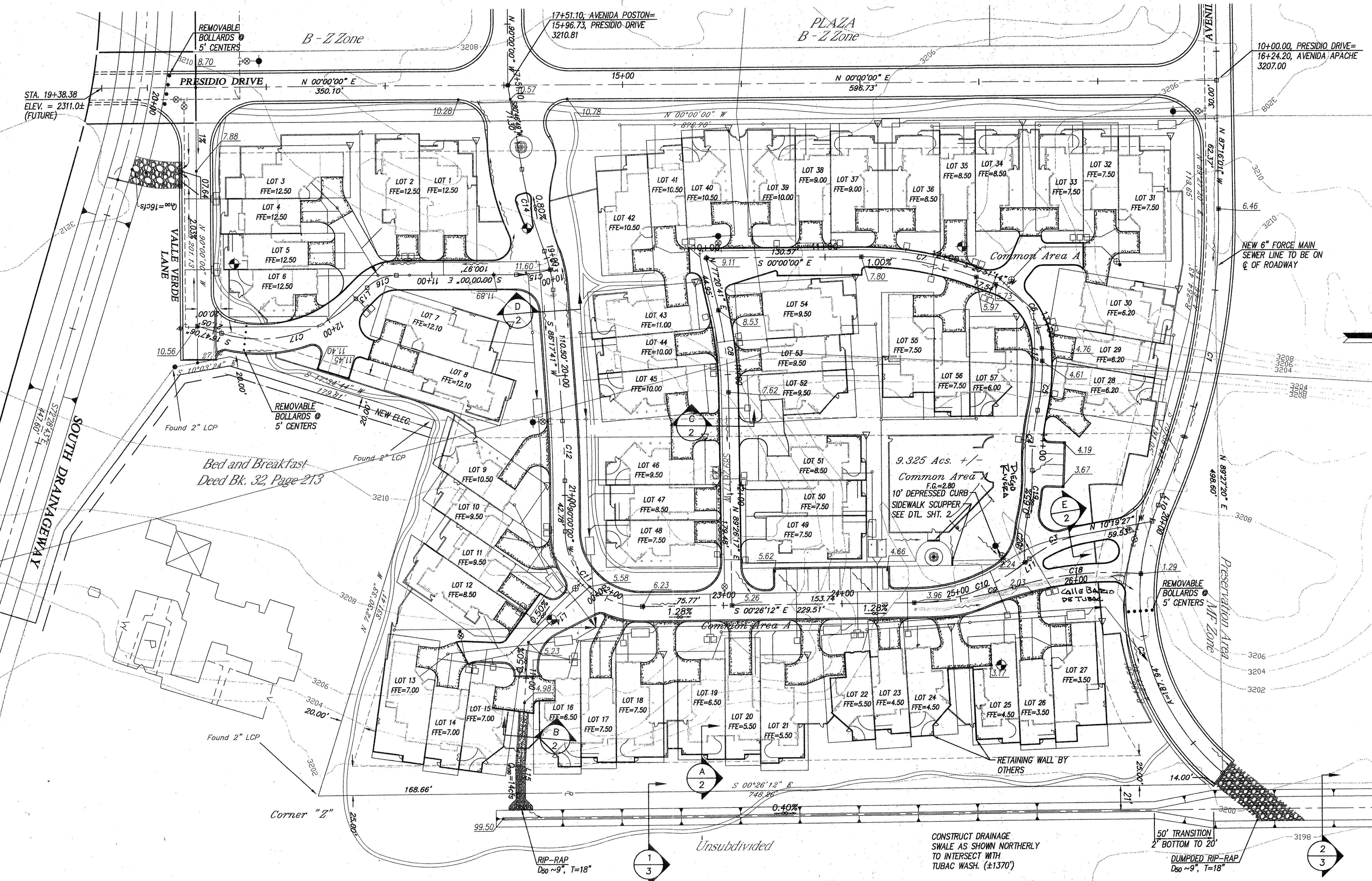
**CIELITO LINDO DE TUBAC**  
LOTS 1-57  
PRIVATE PAVING, GRADING, DRAINAGE,  
SEWER & WATER PLANS

**RS Engineering**  
Consulting Engineers  
595 SOUTH MEYER AVENUE, TUCSON, ARIZONA 85701 (520) 791-3933

|       |     |            |         |
|-------|-----|------------|---------|
| OSGN: | DCA | DATE:      | 8/13/97 |
| DRWN: | RCP | PROJ. NO.: | 9424.7  |
| CHKD: | DCA | SHT. OF:   | 2 8     |

Use or alteration of the information in this instrument for other than the specific purpose for which it was intended and for other than the client for whom it was prepared is forbidden unless expressly permitted in writing in advance by R.S. ENGINEERING INCORPORATED, and R.S. ENGINEERING INCORPORATED shall have no liability to any use of this information without their written consent. © RS ENGINEERING

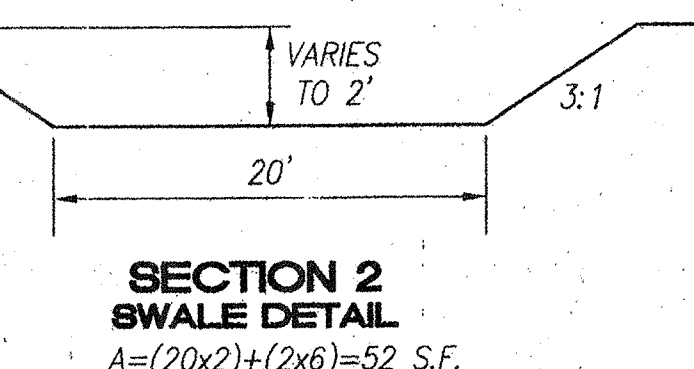
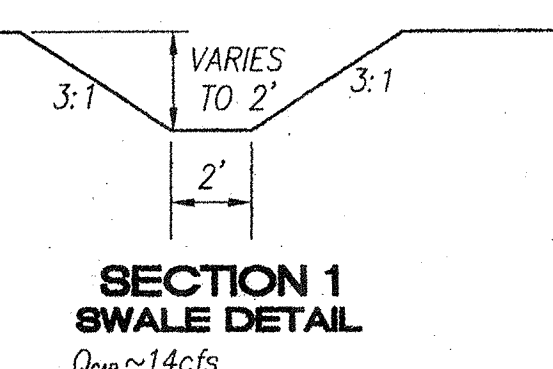
D:\9424\07\dwg\c-sht-1-2.dwg Thu Aug 14 08:38:52 1997 RS ENGINEERING



| CURVE# | RADIUS  | LENGTH  | CHORD   | CHORD BEARING |
|--------|---------|---------|---------|---------------|
| C1     | 589.90' | 248.81' | 243.01' | S 78°33'30" E |
| C2     | 194.02' | 248.12' | 231.55' | N 76°47'33" E |
| C3     | 100.21' | 49.84'  | 49.33'  | N 24°34'25" W |
| C4     | 200.00' | 50.24'  | 50.11'  | S 84°24'41" E |
| C5     | 167.93' | 41.56'  | 41.46'  | S 84°18'20" E |
| C6     | 59.58'  | 70.45'  | 68.42'  | N 54°43'44" E |
| C7     | 271.71' | 98.89'  | 98.35'  | N 10°25'37" E |
| C8     | 330.42' | 69.74'  | 69.61'  | N 83°23'29" E |
| C9     | 300.00' | 85.43'  | 85.14'  | S 08°35'40" E |
| C10    | 151.15' | 101.26' | 99.38'  | S 19°37'47" E |
| C11    | 64.00'  | 101.02' | 90.85'  | S 44°46'54" W |
| C12    | 772.90' | 49.92'  | 49.97'  | N 88°08'51" E |
| C13    | 111.38' | 33.35'  | 33.22'  | N 77°43'02" E |
| C14    | 351.31' | 71.38'  | 71.26'  | N 74°57'34" E |
| C15    | 100.00' | 28.92'  | 28.92'  | S 08°17'05" E |
| C16    | 35.00'  | 27.38'  | 26.86'  | N 22°24'30" W |
| C17    | 114.01' | 122.58' | 116.76' | S 14°00'57" E |
| C18    | 280.00' | 108.02' | 107.35' | S 05°42'01" E |
| C19    | 150.00' | 38.69'  | 38.52'  | S 84°13'09" E |
| C20    | 118.56' | 39.70'  | 39.51'  | S 86°25'23" E |

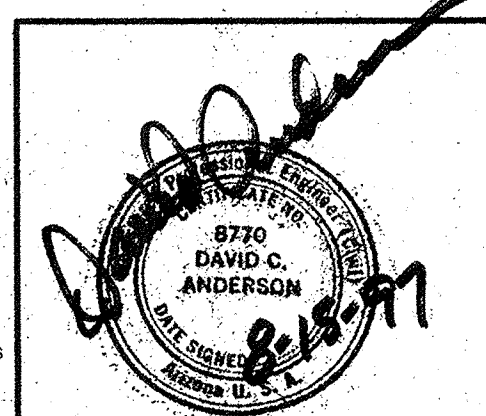
  

| LINE# | BEARING       | DISTANCE |
|-------|---------------|----------|
| L10   | S 66°34'20" E | 8.47'    |
| L11   | S 38°49'23" E | 4.65'    |
| L12   | S 88°36'14" W | 10.71'   |
| L13   | S 44°49'00" E | 13.39'   |
| L14   | N 41°50'14" W | 69.84'   |
| L15   | S 86°00'00" E | 127.62'  |



CONSTRUCT DRAINAGE SWALE AS SHOWN NORTHERLY TO INTERSECT WITH TUBAC WASH. (+1370')

50' TRANSITION 2' BOTTOM TO 20' DUMPED RIP-RAP D<sub>50</sub> ~9", T=18"



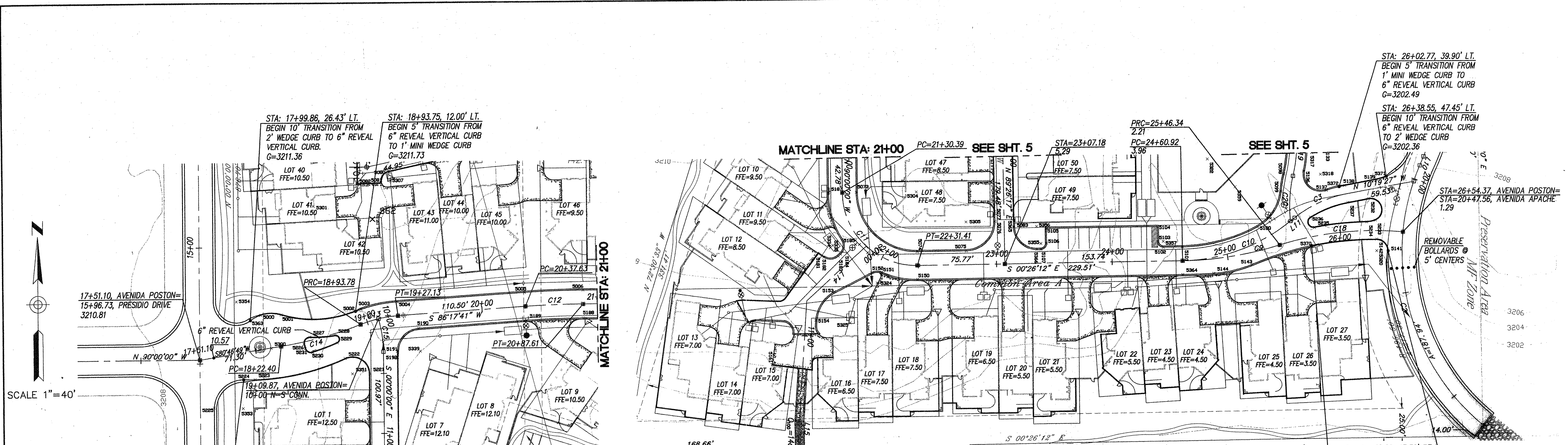
**CIELITO LINDO DE TUBAC  
LOTS 1-57  
SITE GRADING PLAN**

**RS Engineering**  
Consulting Engineers

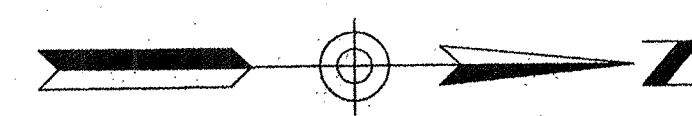
585 SOUTH MEYER AVENUE, TUCSON, ARIZONA 85701 (520) 791-3933

DRWN: DCA  
RCP  
CHKD: DCA

D:\19424\07\06\04\03\013.dwg Fri Aug 15 13:52:22 1997 RS ENGINEERING



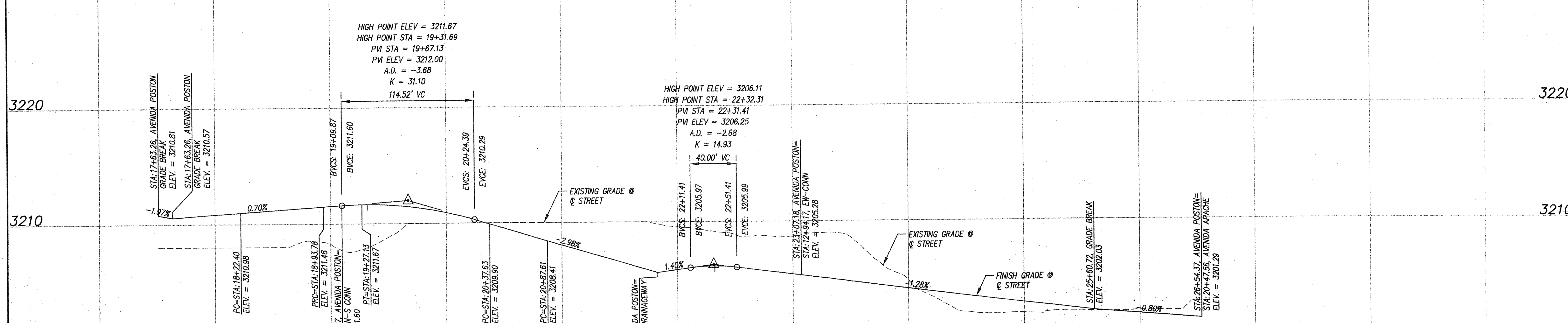
SCALE 1"=40'



SCALE 1"=40'

AVENIDA POSTON

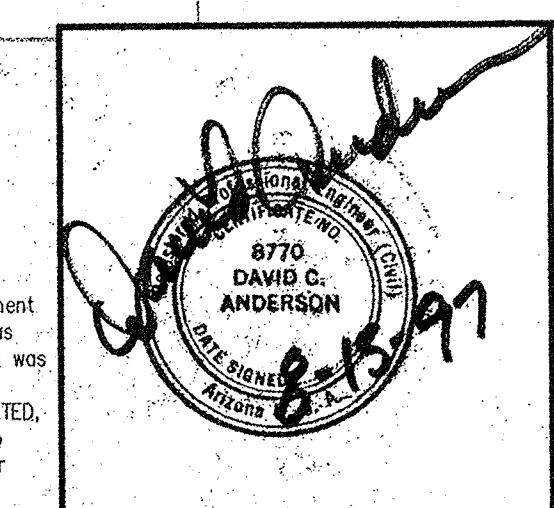
18+00 19+00 20+00 21+00 22+00 23+00 24+00 25+00 26+00 27+00



| CURVE# | RADIUS  | LENGTH  | CHORD   | CHORD BEARING |
|--------|---------|---------|---------|---------------|
| C3     | 100.21' | 49.84'  | 49.33'  | N 24°34'25" W |
| C9     | 300.00' | 85.43'  | 85.14'  | S 08°35'40" E |
| C10    | 151.15' | 101.26' | 99.38'  | S 19°37'47" E |
| C11    | 64.00'  | 101.02' | 90.85'  | S 44°46'54" W |
| C12    | 772.90' | 49.98'  | 49.97'  | N 88°08'51" E |
| C13    | 111.38' | 33.35'  | 33.22'  | N 77°43'02" E |
| C14    | 351.31' | 71.38'  | 71.26'  | N 24°57'34" E |
| C18    | 280.00' | 108.02' | 107.35' | S 05°42'01" E |
| C20    | 118.56' | 39.70'  | 39.51'  | S 86°25'23" E |

745-2221

D:\9424\07\ang\c-shd-4-5.dwg Fp1 Aug 15 14:08:11 1997 RS ENGINEERING



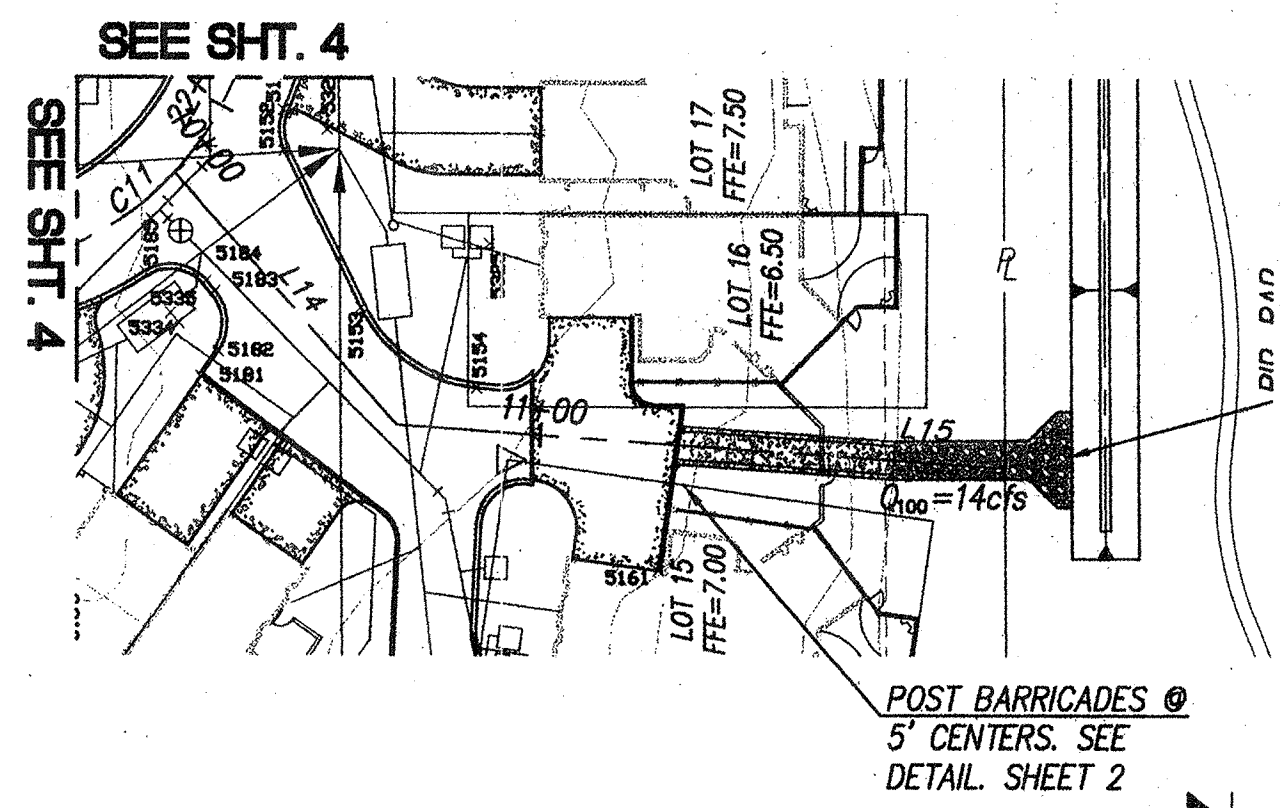
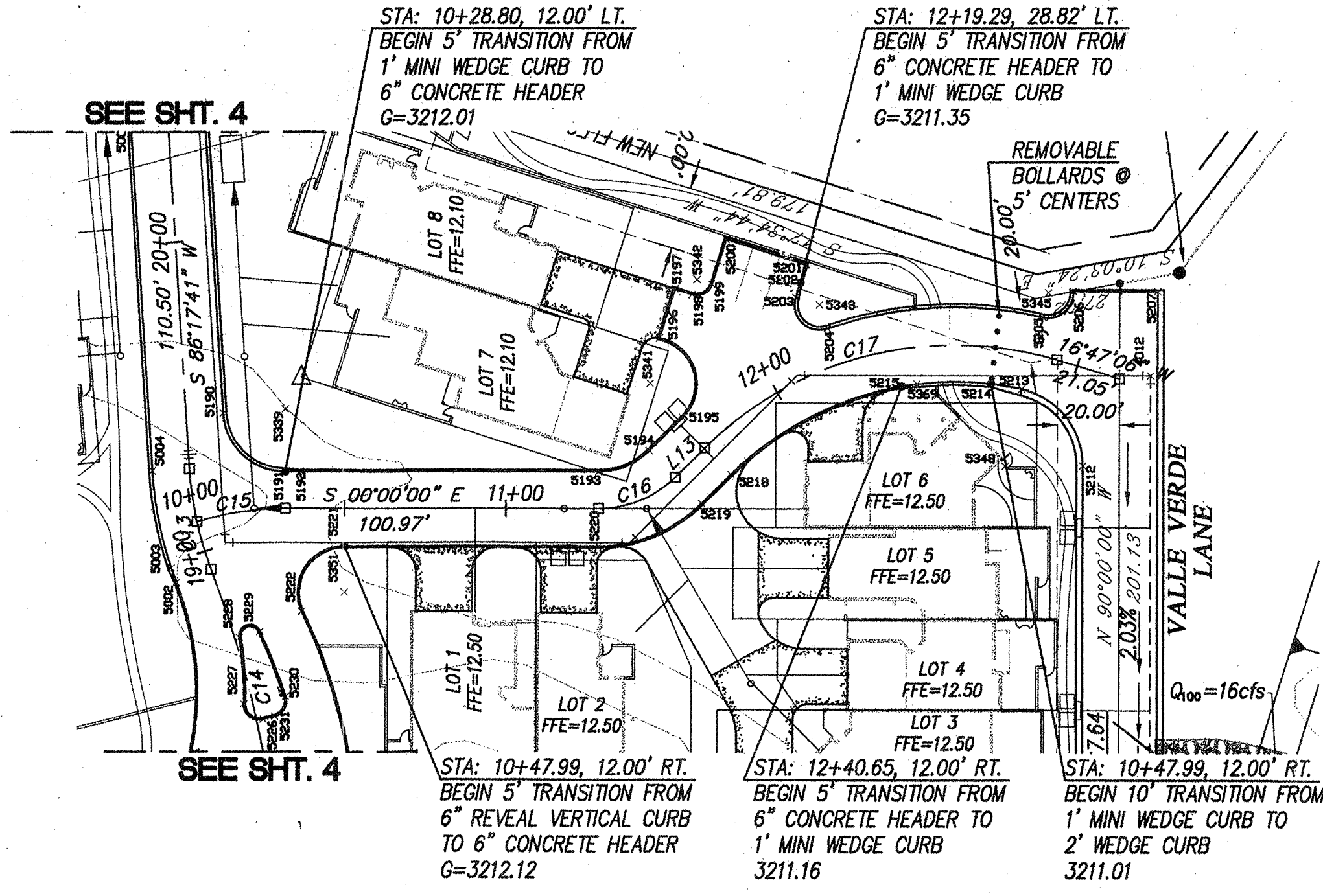
**CIELITO LINDO DE TUBAC  
LOTS 1-57  
GRADING, PAVING &  
DRAINAGE PLANS**

**RS Engineering**  
Consulting Engineers  
595 SOUTH MEYER AVENUE, TUCSON, ARIZONA 85701 (520) 791-3933

|           |               |
|-----------|---------------|
| DSGN: DCA | DATE: 8/13/97 |
| DRWN: RCP | PROJ: 9424.7  |
| CHKD: DCA | SHT. OF: 4 8  |

Use or alteration of the information in this instrument for other than the specific purpose for which it was intended and for other than the client for whom it was prepared is forbidden unless expressly permitted in writing in advance by R.S. ENGINEERING INCORPORATED, and R.S. ENGINEERING INCORPORATED shall have no liability to any use of this information without their written consent. © RS ENGINEERING





**SOUTH POSTON DRAINAGE**

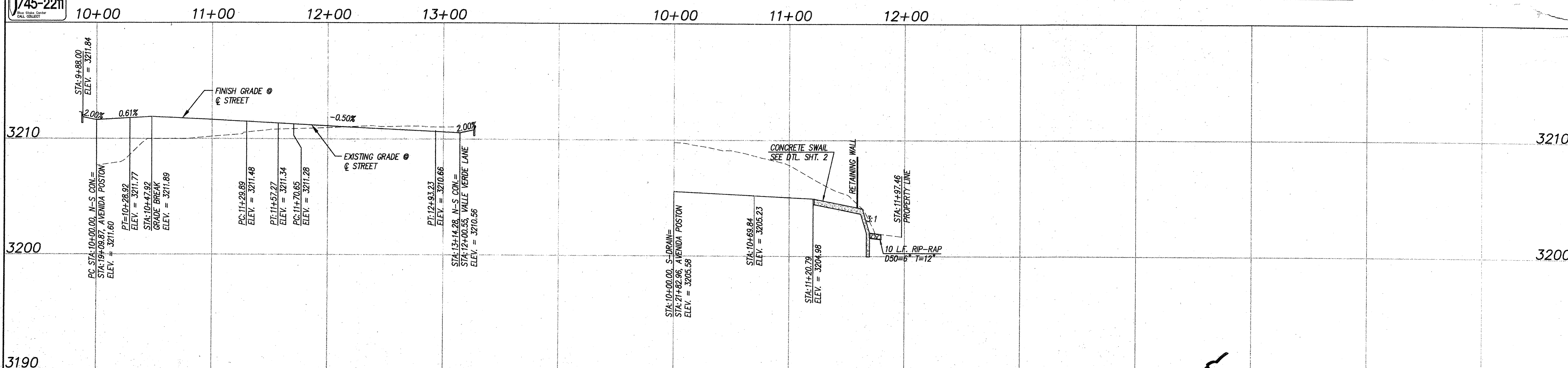
| LINE# | BEARING       | DISTANCE |
|-------|---------------|----------|
| L13   | S 44°49'00" E | 13.38'   |
| L14   | N 41°50'14" W | 69.84'   |
| L15   | S 86°00'00" E | 127.62'  |

| CURVE# | RADIUS  | LENGTH  | CHORD   | CHORD BEARING |
|--------|---------|---------|---------|---------------|
| C15    | 100.00' | 28.92'  | 28.82'  | S 08°17'05" E |
| C16    | 35.00'  | 27.38'  | 26.66'  | N 22°24'30" W |
| C17    | 114.01' | 122.58' | 116.76' | S 14°00'57" E |

SCALE 1"=40'

| POINT | EASTING | NORTHING | ELEV.   | DESC.  |
|-------|---------|----------|---------|--------|
| 5000  | 6208.31 | 6407.06  | 3211.48 | GUT    |
| 5001  | 6225.92 | 6407.13  | 3211.55 | GUT    |
| 5002  | 6290.40 | 6409.75  | 3211.73 | GUT    |
| 5003  | 6295.10 | 6411.45  | 3211.76 | GUT    |
| 5004  | 6326.39 | 6417.59  | 3211.96 | GUT    |
| 5005  | 6436.65 | 6424.74  | 3210.14 | GUT    |
| 5006  | 6487.38 | 6426.38  | 3208.65 | GUT    |
| 5073  | 6530.15 | 6426.38  | 3207.37 | GUT    |
| 5074  | 6582.15 | 6478.77  | 3206.49 | GUT    |
| 5075  | 6581.83 | 6521.46  | 3205.94 | GUT    |
| 5076  | 6556.58 | 6546.27  | 3205.93 | GUT    |
| 5077  | 6547.92 | 6546.18  | 3206.04 | GUT    |
| 5078  | 6414.18 | 6544.87  | 3207.78 | GUT    |
| 5079  | 6346.70 | 6537.05  | 3208.69 | GUT    |
| 5080  | 6319.79 | 6531.01  | 3209.04 | GUT    |
| 5081  | 6313.28 | 6521.24  | 3209.31 | GUT    |
| 5082  | 6293.09 | 6520.61  | 3209.58 | GUT    |
| 5083  | 6561.56 | 6562.32  | 3209.58 | GUT    |
| 5084  | 6414.02 | 6560.87  | 3207.78 | GUT    |
| 5085  | 6361.98 | 6556.33  | 3208.44 | GUT    |
| 5086  | 6329.63 | 6550.61  | 3208.88 | GUT    |
| 5087  | 6323.35 | 6555.33  | 3209.07 | GUT    |
| 5088  | 6312.13 | 6592.42  | 3208.54 | GUT    |
| 5089  | 6314.05 | 6595.00  | 3208.54 | GUT    |
| 5090  | 6316.09 | 6595.00  | 3208.58 | GUT    |
| 5091  | 6316.09 | 6665.58  | 3207.61 | GUT    |
| 5092  | 6313.12 | 6665.58  | 3207.55 | GUT    |
| 5093  | 6309.12 | 6669.64  | 3207.41 | GUT    |
| 5094  | 6332.61 | 6775.85  | 3205.86 | GUT    |
| 5095  | 6379.56 | 6809.05  | 3204.89 | GUT    |
| 5096  | 6429.56 | 6805.40  | 3204.17 | GUT    |
| 5097  | 6481.42 | 6800.32  | 3203.48 | GUT    |
| 5098  | 6517.76 | 6796.64  | 3202.95 | GUT    |
| 5099  | 6532.85 | 6794.06  | 3202.75 | GUT    |
| 5100  | 6563.71 | 6773.30  | 3202.94 | GUT    |
| 5101  | 6580.40 | 6708.27  | 3203.55 | GUT    |
| 5102  | 6580.53 | 6691.85  | 3203.76 | GUT    |
| 5103  | 6575.57 | 6686.81  | 3203.92 | GUT    |
| 5104  | 6562.57 | 6686.71  | 3204.18 | GUT    |
| 5105  | 6563.30 | 6590.72  | 3205.41 | GUT    |
| 5106  | 6576.26 | 6590.81  | 3205.15 | GUT    |
| 5107  | 6581.33 | 6585.85  | 3205.11 | GUT    |
| 5108  | 6293.09 | 6665.58  | 3207.47 | GUT    |
| 5109  | 6311.91 | 6766.44  | 3206.09 | GUT    |
| 5110  | 6301.21 | 6792.00  | 3206.21 | GUT    |
| 5123  | 6312.80 | 6810.16  | 3206.21 | GUT    |
| 5124  | 6319.99 | 6804.60  | 3205.81 | GUT    |
| 5125  | 6333.16 | 6805.41  | 3205.52 | GUT    |
| 5126  | 6379.17 | 6825.05  | 3204.89 | GUT    |
| 5127  | 6389.88 | 6825.31  | 3204.75 | GUT    |
| 5128  | 6433.10 | 6821.00  | 3204.17 | GUT    |
| 5129  | 6447.79 | 6818.26  | 3203.96 | GUT    |
| 5130  | 6452.76 | 6817.60  | 3203.89 | GUT    |
| 5131  | 6458.35 | 6822.37  | 3203.92 | GUT    |
| 5132  | 6458.86 | 6835.41  | 3204.19 | GUT    |
| 5133  | 6494.84 | 6833.98  | 3203.67 | GUT    |
| 5134  | 6494.32 | 6820.98  | 3203.41 | GUT    |
| 5135  | 6498.89 | 6815.80  | 3203.25 | GUT    |
| 5136  | 6515.38 | 6813.51  | 3203.03 | GUT    |
| 5137  | 6532.40 | 6833.15  | 3202.70 | GUT    |
| 5138  | 6528.21 | 6849.11  | 3202.60 | GUT    |
| 5139  | 6523.18 | 6876.69  | 3202.39 | GUT    |
| 5140  | 6499.83 | 6906.18  | 3202.39 | GUT    |
| 5141  | 6585.44 | 6886.44  | 3202.39 | GUT    |
| 5142  | 6575.31 | 6876.57  | 3201.53 | GUT    |
| 5143  | 6596.12 | 6768.76  | 3202.68 | GUT    |
| 5144  | 6603.65 | 6735.24  | 3203.21 | GUT    |
| 5150  | 6606.15 | 6478.96  | 3206.49 | GUT    |
| 5151  | 6599.74 | 6447.83  | 3206.11 | GUT    |
| 5152  | 6599.95 | 6439.36  | 3206.11 | GUT    |
| 5153  | 6616.02 | 6407.00  | 3206.11 | GUT    |
| 5154  | 6640.28 | 6390.47  | 3206.11 | GUT    |
| 5181  | 6582.64 | 6392.78  | 3206.11 | GUT    |
| 5182  | 6586.23 | 6397.90  | 3206.11 | GUT    |
| 5183  | 6585.49 | 6410.31  | 3206.11 | GUT    |
| 5184  | 6583.62 | 6412.40  | 3206.11 | GUT    |
| 5185  | 6570.82 | 6414.17  | 3206.30 | GUT    |
| 5187  | 6530.15 | 6402.38  | 3207.37 | GUT    |
| 5188  | 6487.38 | 6402.38  | 3208.65 | GUT    |
| 5189  | 6438.20 | 6400.79  | 3210.14 | GUT    |
| 5190  | 6344.96 | 6394.75  | 3212.08 | GUT    |
| 5191  | 6326.25 | 6374.79  | 3212.01 | GUT    |
| 5192  | 6326.25 | 6369.79  | 3212.04 | GUT    |
| 5193  | 6326.25 | 6273.68  | 3211.71 | GUT    |
| 5194  | 6332.93 | 6257.47  | 3211.58 | GUT    |
| 5195  | 6343.58 | 6246.74  | 3211.51 | GUT    |
| 5196  | 6369.08 | 6254.20  | 3211.58 | GUT    |
| 5197  | 6384.75 | 6249.24  | 3211.58 | GUT    |
| 5198  | 6382.99 | 6243.69  | 3211.55 | GUT    |
| 5199  | 6386.25 | 6237.42  | 3211.51 | GUT    |
| 5200  | 6400.67 | 6232.85  | 3211.53 | GUT    |
| 5201  | 6392.55 | 6207.10  | 3211.37 | GUT    |
| 5202  | 6386.87 | 6208.89  | 3211.35 | GUT    |
| 5203  | 6382.11 | 6210.40  | 3211.34 | GUT    |
| 5204  | 6372.13 | 6200.17  | 3211.26 | GUT    |
| 5205  | 6375.77 | 6130.85  | 3210.94 | GUT    |
| 5206  | 6383.98 | 6121.03  | 3210.94 | GUT    |
| 5207  | 6383.98 | 6093.87  | 3210.94 | GUT    |
| 5208  | 6207.50 | 6093.87  | 3210.94 | GUT    |
| 5209  | 6174.80 | 6076.92  | 3210.94 | GUT    |
| 5210  | 6167.50 | 6157.87  | 3210.94 | GUT    |
| 5211  | 6207.50 | 6117.87  | 3210.94 | GUT    |
| 5212  | 6328.24 | 6117.87  | 3210.94 | GUT    |
| 5213  | 6352.68 | 6137.58  | 3210.95 | GUT    |
| 5214  | 6354.32 | 6147.51  | 3211.01 | GUT    |
| 5215  | 6353.55 | 6176.25  | 3211.16 | GUT    |
| 5218  | 6325.34 | 6231.06  | 3211.51 | GUT    |
| 5219  | 6315.91 | 6240.56  | 3211.58 | GUT    |
| 5220  | 6302.25 | 6273.68  | 3211.71 | GUT    |
| 5221  | 6302.25 | 6355.59  | 3212.12 | GUT    |
| 5222  | 6281.01 | 6369.23  | 3211.79 | GUT    |
| 5223  | 6203.09 | 6351.18  | 3211.79 | GUT    |
| 5224  | 6193.09 | 6351.16  | 3211.20 | GUT    |
| 5225  | 6167.51 | 6326.83  | 3211.20 | GUT    |
| 5226  | 6245.64 | 6381.73  | 3211.16 | GUT    |
| 5227  | 6250.65 | 6387.98  | 3211.23 | GUT    |
| 5228  | 6272.44 | 6389.37  | 3211.35 | GUT    |
| 5229  | 6274.45 | 6382.73  | 3211.49 | GUT    |
| 5230  | 6252.93 | 6374.51  | 3211.37 | GUT    |
| 5231  | 6246.60 | 6378.03  | 3211.24 | GUT    |
| 5232  | 6539.70 | 6869.72  | 3202.17 | GUT-RP |
| 5233  | 6558.73 | 6875.46  | 3201.17 | GUT-RP |
| 5234  | 6560.34 | 6867.94  | 3201.17 | GUT-RP |
| 5235  | 6564.77 | 6822.72  | 3202.17 | GUT-RP |
| 5236  | 6555.61 | 6819.19  | 3202.46 | GUT-RP |
| 5237  | 6542.96 | 6851.80  | 3202.30 | GUT-RP |
| 5300  | 6217.24 | 6378.42  | 3202.30 | GUT-RP |
| 5303  | 6487.38 | 5641.48  | 3202.30 | GUT-RP |
| 5304  | 6530.15 | 6478.38  | 3202.30 | GUT-RP |
| 5305  | 6556.83 | 6521.27  | 3202.30 | GUT-RP |
| 5307  | 6321.65 | 6522.72  | 3202.30 | GUT-RP |
| 5309  | 6293.25 | 6773.65  | 3202.30 | GUT-RP |
| 5313  | 6326.11 | 6812.50  | 3202.30 | GUT-RP |
| 5314  | 6380.81 | 6757.49  | 3202.30 | GUT-RP |
| 5315  | 6394.16 | 6649.43  | 3202.30 | GUT-RP |
| 5316  | 6453.35 | 6822.57  | 3202.30 | GUT-RP |
| 5317  | 6499.32 | 6820.78  | 3202.30 | GUT-RP |
| 5318  | 6518.23 | 6828.24  | 3202.30 | GUT-RP |
| 5319  | 6483.83 | 6869.52  | 3202.30 | GUT-RP |
| 5320  | 6585.31 | 6876.45  | 3202.30 | GUT-RP |
| 5321  | 6847.79 | 6873.25  | 3202.30 | GUT-RP |
| 5322  | 6503.77 | 6730.42  | 3202.30 | GUT-RP |
| 5324  | 6608.90 | 6443.81  | 3202.30 | GUT-RP |
| 5325  | 6642.89 | 6420.35  | 3202.30 | GUT-RP |
| 5334  | 6578.04 | 6403.64  | 3202.30 | GUT-RP |
| 5335  | 6576.17 | 6405.73  | 3202.30 | GUT-RP |
| 5338  | 6487.38 | 5641.48  | 3202.30 | GUT-RP |
| 5339  | 6346.25 | 6374.79  | 3202.30 | GUT-RP |
| 5341  | 6354.37 | 6257.16  | 3202.30 | GUT-RP |
| 5342  | 6387.76 | 6242.18  | 3202.30 | GUT-RP |
| 5343  | 6379.69 | 6202.78  | 3202.30 | GUT-RP |
| 5344  | 6254.89 | 6158.56  | 3202.30 | GUT-RP |
| 5345  | 6383.56 | 6129.05  | 3202.30 | GUT-RP |
| 5346  | 6207.50 | 6053.87  | 3202.30 | GUT-RP |
| 5347  | 6207.50 | 6157.87  | 3202.30 | GUT-RP |
| 5348  | 6328.24 | 6142.87  | 3202.30 | GUT-RP |
| 5349  | 6292.98 | 6159.16  | 3202.30 | GUT-RP |
| 5351  | 6287.25 | 6355.59  | 3202.30 | GUT-RP |
| 5352  | 6197.81 | 6351.11  | 3202.30 | GUT-RP |
| 5353  | 6192.50 | 6326.17  | 3202.30 | GUT-RP |
| 5354  | 6187.50 | 6418.61  | 3202.30 | GUT-RP |
| 5355  | 6576.33 | 6585.81  | 3202.30 | GUT-RP |
| 5356  | 6561.36 | 6582.32  | 3202.30 | GUT-RP |
| 5357  | 6575.53 | 6691.81  | 3202.30 | GUT-RP |
| 5358  | 6441.26 | 6707.21  | 3202.30 | GUT-RP |
| 5359  | 6528.51 | 6754.30  | 3202.30 | GUT-RP |
| 5360  | 6546.59 | 6919.88  | 3202.30 | GUT-RP |
| 5361  | 6475.58 | 7008.24  | 3202.30 | GUT-RP |
| 5362  | 6394.16 | 6649.43  | 3202.30 | GUT-RP |
| 5363  | 6199.39 | 6402.53  | 3211.36 | GUT-RP |
| 5364  | 6604.40 | 6708.46  | 3203.55 | GUT-RP |
| 5365  | 6551.86 | 6562.22  | 3205.99 | GUT-RP |
| 5366  | 6581.36 | 6582.47  | 3205.16 | GUT-RP |
| 5367  | 6326.37 | 6759.46  | 3206.11 | GUT-RP |
| 5368  | 6390.27 | 6809.32  | 3204.75 | GUT-RP |
| 5369  | 6354.27 | 6171.27  | 3211.14 | GUT-RP |
| 5370  | 6580.53 | 6820.10  | 3202.30 | GUT-RP |
| 5371  | 6520.57 | 6885.34  | 3202.30 | GUT-RP |
| 5372  | 6529.21 | 6844.23  | 3202.30 | GUT-RP |

745-2211



8770  
DAVID C. ANDERSON  
DATE ISSUED: 8-13-97

**CIELITO LINDO DE TUBAC**  
LOTS 1-57  
GRADING, PAVING &  
DRAINAGE PLANS

DRAWING #:  
**6**

**RS Engineering**  
Consulting Engineers  
595 SOUTH MEYER AVENUE, TUCSON, ARIZONA 85701 (520) 791-3933

|       |          |
|-------|----------|
| DSGN: | DATE:    |
| DCA   | 8/13/97  |
| DRWN: | PROJ.:   |
| RCP   | 9424.7   |
| CHKD: | SHT. OF: |
| DCA   | 6 8      |

Use or alteration of the information in this instrument for other than the specific purpose for which it was intended and for other than the client for whom it was prepared is forbidden unless expressly permitted in writing in advance by R.S. ENGINEERING INCORPORATED, and R.S. ENGINEERING INCORPORATED shall have no liability to any use of this information without their written consent. © R.S. ENGINEERING

**LEGEND**  
 □ NEW SEPTIC TANK  
 6" NEW COLLECTOR LINE  
 HCS 3" NEW HCS LINE

SCALE 1"=40'

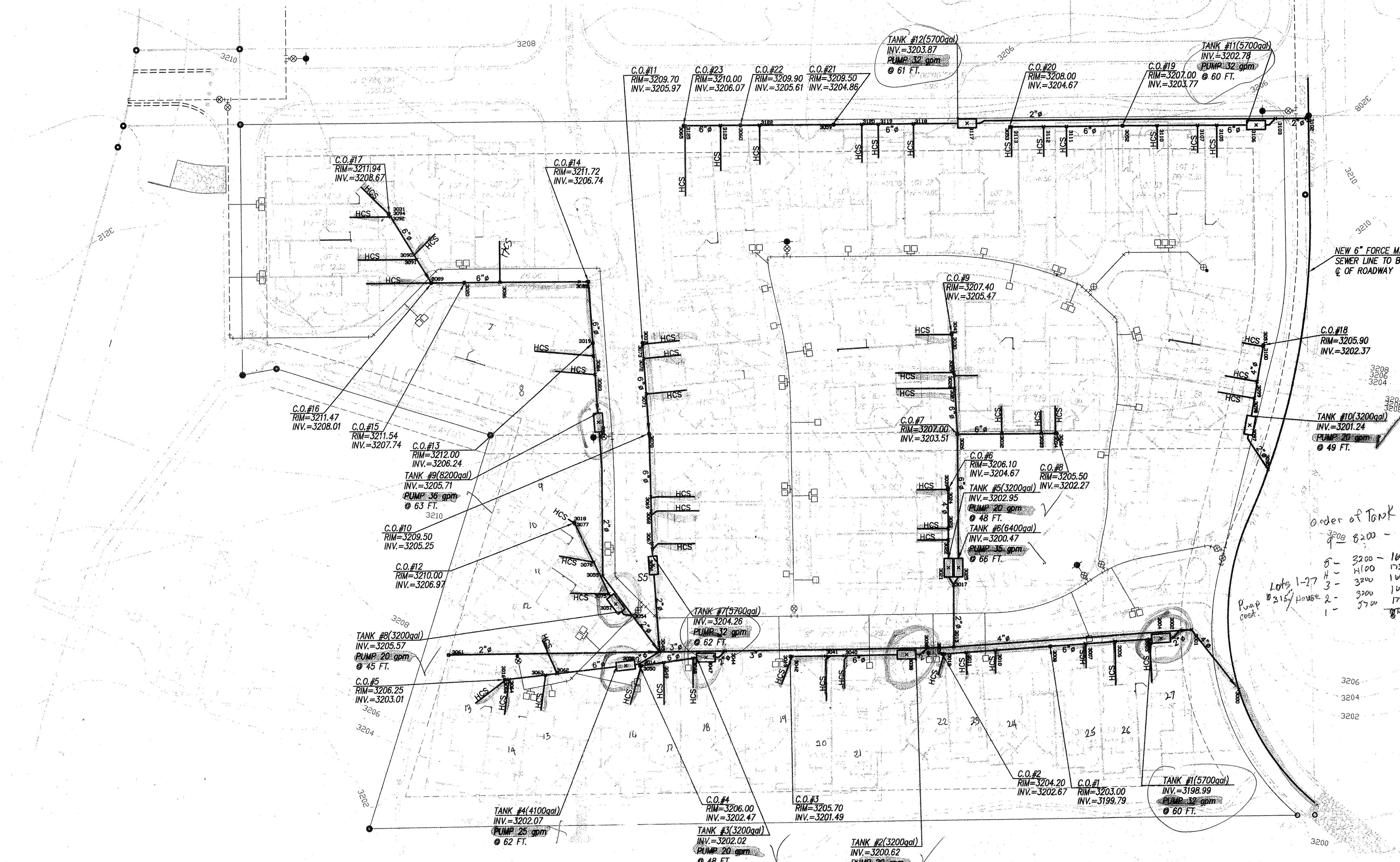
*Sewer*  
 Green 1 Phase  
 Pink 2 Phase  
 Yellow 3 Phase  
 Circle Green Temp Tanks

*Order of Tank Use*  
 3208 8200 - 1915  
 Lots 1-27  
 315 House 2 - 3200 1604  
 1 - 3200 1636  
 5700 1733  
 8456

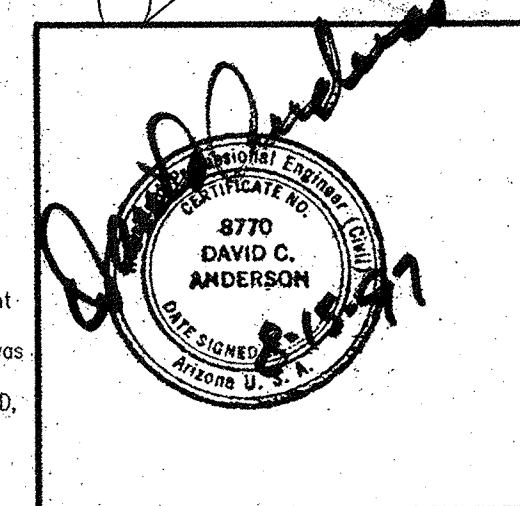
| Tank # | Cost | Price |
|--------|------|-------|
| 2      | 3200 | 1639  |
| 3      |      | 1665  |
| 5      |      | 1626  |
| 8      |      | 1690  |
| 10     |      | 1690  |
| 4      | 4100 | 1733  |
| 1      | 5700 | 1733  |
| 7      |      | 1785  |
| 11     |      | 1733  |
| 12     |      | 1759  |
| 6      | 6400 | 1896  |
| 9      | 8200 | 1915  |

**NOTE:**  
 ALL HCS ARE 3" FROM HOUSE TO COLLECTOR LINE. MIN. 2% GRADE.

30 GPM - 5  
 25 GPM - 1  
 32 " - 2  
 35 " - 2



| #    | NORTHING | EASTING | DESC    |
|------|----------|---------|---------|
| 3000 | 6506.85  | 6644.68 |         |
| 3001 | 6869.10  | 6596.96 | C.P.#1  |
| 3002 | 6854.93  | 6602.87 | C.P.#2  |
| 3003 | 6844.45  | 6603.34 | S.T.#1  |
| 3004 | 6835.28  | 6604.13 | HCS     |
| 3005 | 6807.44  | 6605.90 | HCS     |
| 3006 | 6783.81  | 6607.40 | HCS     |
| 3007 | 6755.13  | 6609.23 | C.U.#1  |
| 3008 | 6658.33  | 6614.76 | C.U.#2  |
| 3009 | 6710.78  | 6612.56 | HCS     |
| 3010 | 6697.36  | 6613.36 | HCS     |
| 3011 | 6669.33  | 6614.70 | HCS     |
| 3012 | 6545.34  | 6615.71 | C.U.#3  |
| 3013 | 6424.04  | 6622.81 | C.U.#4  |
| 3014 | 6677.39  | 6609.18 | C.P.#3  |
| 3015 | 6714.85  | 6633.07 | C.D.#5  |
| 3016 | 6677.39  | 6599.91 | C.P.#10 |
| 3017 | 6571.75  | 6507.42 | C.U.#12 |
| 3018 | 6387.91  | 6363.23 | C.U.#13 |
| 3019 | 6284.74  | 6314.23 | C.U.#15 |
| 3020 | 6284.74  | 6314.23 | C.U.#15 |
| 3021 | 6673.39  | 6546.23 | S.T.#5  |



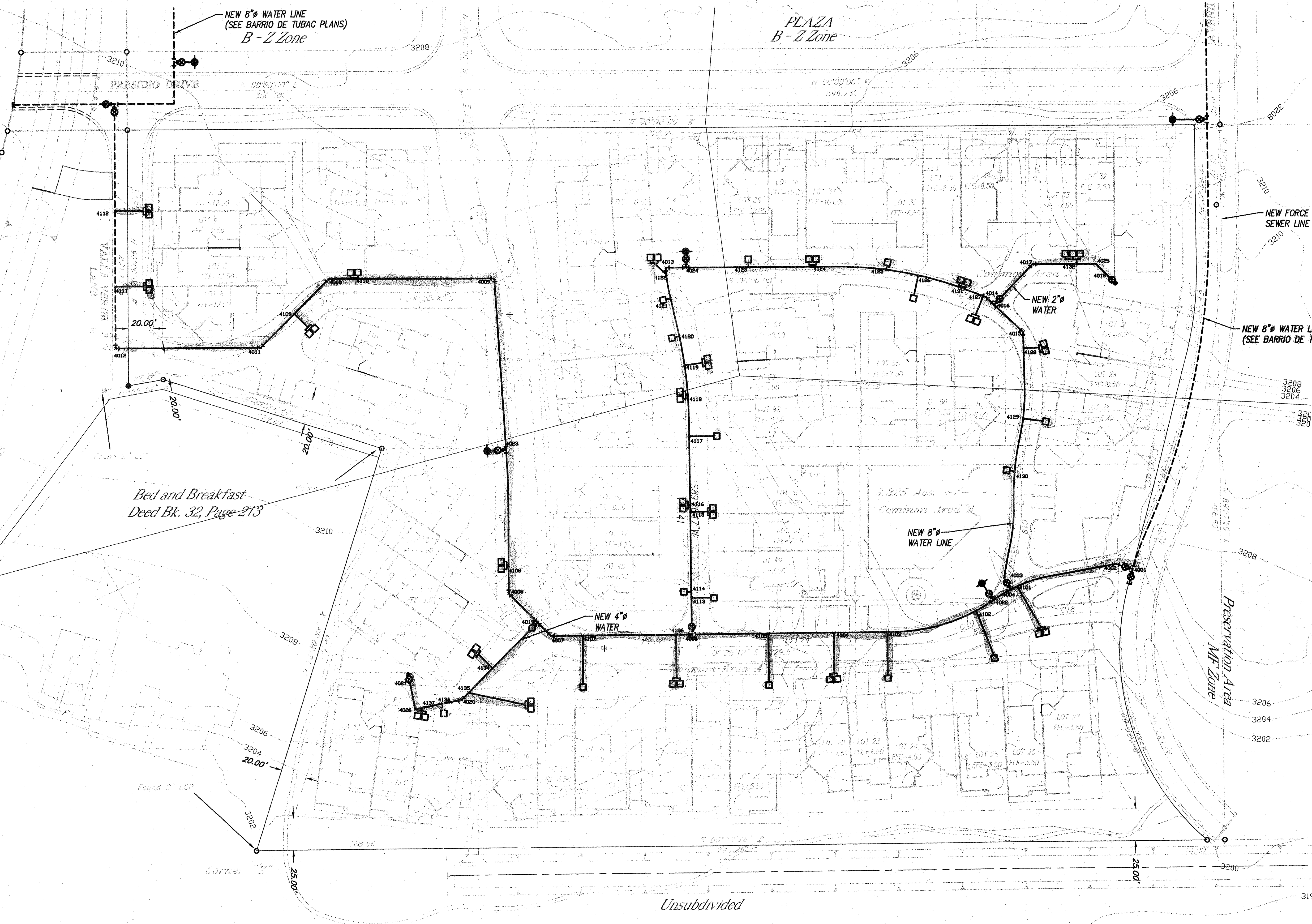
**CIELITO LINDO DE TUBAC  
 LOTS 1-27  
 SEWER PLAN**

**RS Engineering**  
 Consulting Engineers

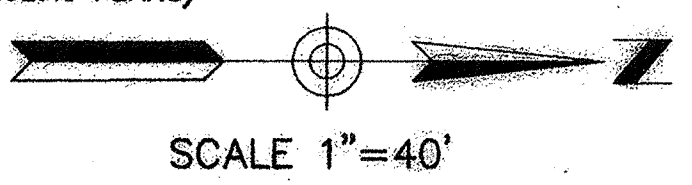
595 SOUTH MEYER AVENUE, TUCSON, ARIZONA 85701 (520) 791-3933

DATE: 8/13/97  
 PROJ: 9424.7  
 SHEET: 7 OF 8

Use or alteration of the information in this instrument for other than the specific purpose for which it was intended and for other than the client for whom it was prepared is forbidden unless expressly permitted in writing in advance by R.S. ENGINEERING INCORPORATED, and R.S. ENGINEERING INCORPORATED shall have no liability to any use of this information without their written consent. © RS ENGINEERING



Water  
Orange 1 Phase  
Purple 2 Phase



| CURVE# | RADIUS  | LENGTH  | CHORD   | CHORD BEARING |
|--------|---------|---------|---------|---------------|
| C1     | 589.90' | 246.81' | 245.01' | S 78°33'30" E |
| C2     | 194.02' | 248.12' | 231.55' | N 76°47'33" E |
| C3     | 100.21' | 49.84'  | 49.33'  | N 24°34'25" W |
| C4     | 121.29' | 89.25'  | 87.25'  | N 89°41'36" E |
| C5     | 167.93' | 62.05'  | 61.69'  | S 80°48'41" E |
| C6     | 59.58'  | 70.45'  | 66.42'  | N 54°43'44" E |
| C7     | 271.71' | 98.89'  | 98.35'  | N 10°25'37" E |
| C8     | 330.42' | 69.24'  | 68.61'  | N 83°23'29" E |
| C9     | 647.53' | 99.80'  | 99.70'  | S 04°51'08" E |
| C10    | 151.15' | 101.26' | 99.35'  | S 19°32'47" E |
| C11    | 64.00'  | 101.02' | 90.85'  | S 44°46'54" W |
| C12    | 772.90' | 49.98'  | 49.97'  | N 88°08'51" E |
| C13    | 111.38' | 33.35'  | 33.22'  | N 77°43'02" E |
| C14    | 351.31' | 71.38'  | 71.26'  | N 74°57'34" E |
| C15    | 100.00' | 28.92'  | 28.82'  | S 08°17'05" E |
| C16    | 35.00'  | 27.38'  | 26.68'  | N 22°24'30" W |
| C17    | 114.01' | 122.58' | 116.76' | S 14°00'57" E |

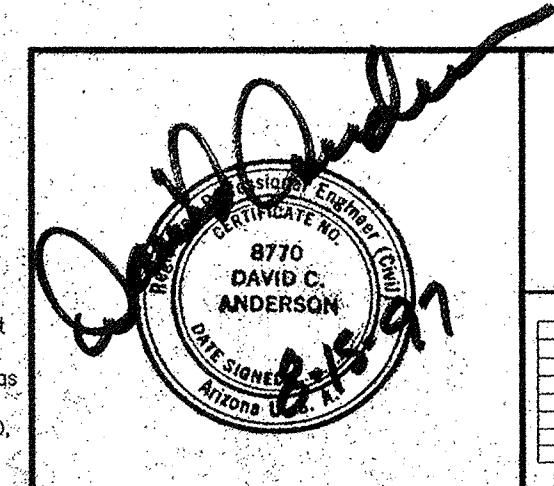
| LINE# | BEARING       | DISTANCE |
|-------|---------------|----------|
| L1    | S 67°13'17" W | 38.16'   |
| L2    | N 54°40'58" E | 12.11'   |
| L3    | N 17°34'44" E | 21.02'   |
| L4    | S 02°31'39" W | 26.37'   |
| L5    | N 25°11'28" E | 16.80'   |
| L6    | S 78°02'23" W | 16.04'   |
| L7    | S 27°35'11" E | 16.79'   |
| L8    | S 24°01'24" W | 16.70'   |
| L9    | S 20°53'16" E | 15.93'   |
| L10   | S 66°34'20" E | 8.47'    |
| L11   | S 38°49'23" E | 4.65'    |
| L12   | S 88°36'14" W | 10.71'   |
| L13   | S 44°49'00" E | 13.38'   |

| #    | NORTHING | EASTING | DESC   |
|------|----------|---------|--|
| 4001 | 6895.76  | 6533.98 | 1-8" TEE, 8" VALVES                              |
| 4002 | 6882.50  | 6529.75 | 1-8" x 2 1/2" BEND                               |
| 4003 | 6794.34  | 6540.53 | 1-8" x 1 1/4" BEND & P.I.P.E., 1-8" FIRE HYDRANT |
| 4004 | 6799.33  | 6550.00 | 8" TEE, 8" VALVE                                 |
| 4005 | 6548.53  | 6582.62 | 8" TEE, 8" VALVE                                 |
| 4006 | 6437.70  | 6584.48 | 1-8" x 4 1/2" BEND                               |
| 4007 | 6404.38  | 6551.14 | 1-8" x 4 1/2" BEND                               |
| 4008 | 6394.06  | 6303.33 | 1-8" x 90° BEND                                  |
| 4009 | 6263.65  | 6303.33 | 1-8" x 4 1/2" BEND                               |
| 4010 | 6209.29  | 6356.39 | 1-8" x 4 1/2" BEND                               |
| 4011 | 6206.09  | 6356.39 | 1-8" x 90° BEND                                  |
| 4012 | 6259.40  | 6295.09 | 1-8" x 90° BEND                                  |
| 4013 | 6280.88  | 6319.54 | 1-8" x 2 1/2" BEND                               |
| 4014 | 6210.27  | 6344.54 | 1-8" x 4 1/2" BEND                               |
| 4015 | 6287.54  | 6325.88 | 1-2" SERVICE SADDLE W/ CORP. STOP, 1-2" VALVE    |
| 4016 | 6817.88  | 6294.02 | 1-2" x 4 1/2" BEND                               |
| 4017 | 6878.61  | 6304.75 | 1-2" DIA.  |
| 4018 | 6427.09  | 6273.86 | 1-8" x 4 1/2" TEE, 1-4" VA                       |
| 4019 | 6366.39  | 6288.96 | 1-4" x 4 1/2" BEND                               |
| 4020 | 6326.39  | 6280.32 | 8" DIA.  |
| 4021 | 6786.10  | 6558.30 | 8" x 6" 1.6" V. 15 L.F. 6" PIPE, 1-FIRE HYDRANT  |

| #    | NORTHING | EASTING | DESC  |
|------|----------|---------|---|
| 4023 | 6402.74  | 6437.50 | 8" x 6" 1.6" V. 15 L.F. 6" PIPE, 1-FIRE HYDRANT |
| 4024 | 6345.06  | 6295.09 | P.I.P.E., 1-FIRE HYDRANT                        |
| 4025 | 6867.88  | 6294.02 | 2" x 4 1/2" BEND                                |
| 4026 | 6330.44  | 6641.23 | 4" x 90° BEND                                   |
| 4101 | 6804.76  | 6547.42 | LOTS 26-27, 1" WS                               |
| 4102 | 6772.44  | 6566.43 | LOT 25, 3/4" WS                                 |
| 4103 | 6702.35  | 6582.48 | LOT 24, 3/4" WS                                 |
| 4104 | 6660.53  | 6582.77 | LOTS 22-23, 1" WS                               |
| 4105 | 6608.39  | 6583.16 | LOT 21, 3/4" WS                                 |
| 4106 | 6536.17  | 6583.71 | LOTS 19-20, 1" WS                               |
| 4107 | 6462.53  | 6584.27 | LOT 18, 3/4" WS                                 |
| 4108 | 6404.38  | 6582.81 | LOTS 9-10, 1" WS                                |
| 4109 | 6336.36  | 6330.42 | LOTS 7-8, 1" WS                                 |
| 4110 | 6283.72  | 6303.33 | LOTS 1-2, 1" WS                                 |
| 4111 | 6096.09  | 6308.28 | LOTS 3-5, 1" WS                                 |
| 4112 | 6096.09  | 6248.63 | LOTS 3-4, 1" WS                                 |
| 4113 | 6548.25  | 6555.03 | LOT 49, 3/4" WS                                 |
| 4114 | 6548.25  | 6550.25 | LOT 48, 3/4" WS                                 |
| 4115 | 6547.58  | 6486.79 | LOTS 50-51, 1" WS                               |
| 4116 | 6547.53  | 6481.18 | LOTS 46-47, 1" WS                               |
| 4117 | 6547.00  | 6427.56 | LOT 52, 3/4" WS                                 |

| #    | NORTHING | EASTING | DESC                  |
|------|----------|---------|-----------------------|
| 4118 | 6542.15  | 6585.72 | LOTS 44-45, 1" WS     |
| 4119 | 6543.75  | 6572.22 | LOTS 53-54, 1" WS     |
| 4120 | 6539.70  | 6349.43 | LOT 43, 3/4" WS       |
| 4121 | 6532.96  | 6313.33 | LOT 42, 3/4" WS       |
| 4122 | 6529.68  | 6300.36 | LOTS 40-41, 1" WS     |
| 4123 | 6524.37  | 6295.09 | LOT 39, 3/4" WS       |
| 4124 | 6644.79  | 6595.09 | LOTS 37-38, 1" WS     |
| 4125 | 6702.35  | 6597.98 | LOT 36, 3/4" WS       |
| 4126 | 6727.98  | 6302.19 | LOT 35, 3/4" WS       |
| 4127 | 6778.98  | 6318.82 | LOTS 36-37, 1" WS     |
| 4128 | 6810.38  | 6360.20 | LOTS 29-30, 1" WS     |
| 4129 | 6809.99  | 6415.20 | LOT 28, 3/4" WS       |
| 4130 | 6803.13  | 6456.25 | CHMM AREA, 3/4" WS    |
| 4131 | 6762.26  | 6312.46 | LOTS 34-35, 1" WS     |
| 4132 | 6885.00  | 6294.06 | LOTS 31-32, 33, 1" WS |
| 4133 | 6391.46  | 6609.48 | LOTS 11-12, 1" WS     |
| 4134 | 6372.47  | 6629.48 | LOTS 15-17, 1" WS     |
| 4135 | 6381.96  | 6536.92 | LOT 15, 3/4" WS       |
| 4137 | 6335.24  | 6640.26 | LOTS 13-14, 1" WS     |

NOTE:  
• SEE COVER SHEET FOR WATER NOTES



**CIELITO LINDO DE TUBAC  
LOTS 1-57  
WATER PLAN**

DRAWING # **8**

DATE **8/1/07**

DSGN: **DCA**  
PRG: **94**  
CHKD: **RCP**  
SH: **DCA**

**RS Engineering**  
Consulting Engineers

595 SOUTH MEYER AVENUE, TUCSON, ARIZONA 85701 (520) 791-3933



PLAZA  
B-Z Zone

NEW 8" WATER LINE  
(SEE BARRIO DE TUBAC PLANS)  
B-Z Zone

NEW FORCE MAIN  
SEWER LINE

NEW 8" WATER LINE  
(SEE BARRIO DE TUBAC PLANS)



SCALE 1"=40'

| CURVE# | RADIUS  | LENGTH  | CHORD   | CHORD BEARING |
|--------|---------|---------|---------|---------------|
| C1     | 589.90' | 246.81' | 245.01' | S 78°33'30" E |
| C2     | 194.02' | 248.12' | 231.55' | N 76°47'33" E |
| C3     | 100.21' | 49.84'  | 49.33'  | N 24°34'25" W |
| C4     | 121.29' | 89.25'  | 87.25'  | N 89°4'36" E  |
| C5     | 167.93' | 62.05'  | 61.69'  | S 80°48'41" E |
| C6     | 59.58'  | 70.45'  | 66.42'  | N 54°43'44" E |
| C7     | 271.71' | 98.89'  | 98.35'  | N 10°25'37" E |
| C8     | 330.42' | 69.74'  | 69.61'  | N 82°23'29" E |
| C9     | 647.53' | 99.80'  | 99.70'  | S 04°51'08" E |
| C10    | 151.15' | 101.26' | 99.38'  | S 19°37'47" E |
| C11    | 64.00'  | 101.02' | 90.85'  | S 44°46'54" W |
| C12    | 772.90' | 49.98'  | 49.97'  | N 88°08'51" E |
| C13    | 111.38' | 33.35'  | 33.22'  | N 77°43'02" E |
| C14    | 351.31' | 71.39'  | 71.26'  | N 74°57'34" E |
| C15    | 100.00' | 28.92'  | 28.82'  | S 08°17'05" E |
| C16    | 35.00'  | 27.38'  | 26.68'  | N 22°24'30" W |
| C17    | 114.01' | 122.58' | 116.76' | S 14°00'57" E |

| LINE# | BEARING       | DISTANCE |
|-------|---------------|----------|
| L1    | S 67°13'17" W | 38.16'   |
| L2    | N 54°40'58" E | 12.11'   |
| L3    | N 17°34'44" E | 21.02'   |
| L4    | S 02°31'39" W | 26.37'   |
| L5    | N 25°11'28" E | 16.80'   |
| L6    | S 28°02'23" W | 16.04'   |
| L7    | S 27°35'11" E | 16.79'   |
| L8    | S 24°24'24" W | 16.70'   |
| L9    | S 20°53'16" E | 15.77'   |
| L10   | S 66°34'20" E | 8.47'    |
| L11   | S 38°43'23" E | 4.55'    |
| L12   | S 25°32'14" W | 10.71'   |
| L13   | S 44°49'05" E | 13.35'   |

Bed and Breakfast  
Deed Bk. 32, Page 213

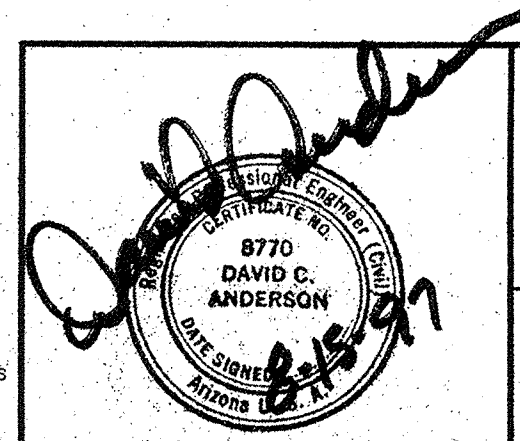
NEW 8" WATER LINE

NEW 4" WATER

Unsubdivided

NOTE:  
SEE COVER SHEET  
FOR WATER NOTES

| #    | NORTHING | EASTING | DESC   |
|------|----------|---------|--|
| 4001 | 6895.76  | 6393.92 | 1-8" TEE, 2-8" VALVES                              |
| 4002 | 6882.50  | 6289.78 | 1-8" x 2" BEND                                     |
| 4003 | 6794.34  | 6340.53 | 1-8" x 11 1/4" BEND & 1-8" x 2" BEND               |
| 4004 | 6799.33  | 6350.00 | 8" TEE, 8" VALVE                                   |
| 4005 | 6548.53  | 6383.62 | 8" TEE, 8" VALVE                                   |
| 4007 | 6437.70  | 6384.46 | 1-8" x 4" BEND                                     |
| 4008 | 6404.38  | 6351.14 | 1-8" x 4" BEND                                     |
| 4009 | 6394.06  | 6303.33 | 1-8" x 3" BEND                                     |
| 4010 | 6353.65  | 6303.33 | 1-8" x 4" BEND                                     |
| 4011 | 6305.99  | 6356.39 | 1-8" x 4" BEND                                     |
| 4012 | 6096.09  | 6356.99 | 1-8" x 3" BEND                                     |
| 4013 | 6096.40  | 6296.09 | 1-8" x 3" BEND                                     |
| 4014 | 6780.88  | 6319.54 | 1-8" x 2" BEND                                     |
| 4015 | 6810.27  | 6347.54 | 1-8" x 4" BEND                                     |
| 4016 | 6787.54  | 6325.88 | 1-2" SERVICE SADDLE W/ COOP STOP, 1-2" VALVE       |
| 4017 | 6817.88  | 6294.02 | 1-2" x 4" BEND                                     |
| 4018 | 6878.61  | 6304.75 | 1-2" DIA   |
| 4019 | 6427.09  | 6273.86 | 1-8" x 4" TEE, 1-4" VA                             |
| 4020 | 6366.99  | 6636.36 | 1-4" x 8" BEND                                     |
| 4021 | 6386.28  | 6620.32 | 2" DIA   |
| 4022 | 6786.10  | 6596.30 | 8" x 6" T, 6" V, 16" L, F, 6" PIPE, 1-FIRE HYDRANT |
| 4023 | 6402.74  | 6437.50 | 8" x 6" T, 6" V, 15" L, F, 6" PIPE, 1-FIRE HYDRANT |
| 4024 | 6545.06  | 6295.09 | 8" x 6" T, 6" V, 10" L, F, 6" PIPE, 1-FIRE HYDRANT |
| 4025 | 6867.88  | 6294.02 | 2" x 4" BEND                                       |
| 4026 | 6330.44  | 6641.23 | 4" x 3" BEND                                       |
| 4101 | 6806.76  | 6347.42 | LOTS 26-27, 1" WS                                  |
| 4102 | 6772.44  | 6366.43 | LOT 25, 3/4" WS                                    |
| 4103 | 6706.95  | 6382.45 | LOT 24, 3/4" WS                                    |
| 4104 | 6660.33  | 6382.77 | LOTS 22-23, 1" WS                                  |
| 4105 | 6608.93  | 6383.16 | LOT 21, 3/4" WS                                    |
| 4106 | 6536.17  | 6383.71 | LOTS 19-20, 1" WS                                  |
| 4107 | 6462.33  | 6384.27 | LOT 18, 3/4" WS                                    |
| 4108 | 6406.38  | 6383.81 | LOTS 9-10, 1" WS                                   |
| 4109 | 6236.36  | 6330.42 | LOTS 7-8, 1" WS                                    |
| 4110 | 6283.72  | 6303.33 | LOTS 1-2, 1" WS                                    |
| 4111 | 6096.09  | 6308.28 | LOTS 3-5, 1" WS                                    |
| 4112 | 6096.09  | 6248.65 | LOTS 3-4, 1" WS                                    |
| 4113 | 6648.25  | 6559.03 | LOT 49, 3/4" WS                                    |
| 4114 | 6548.20  | 6350.25 | LOT 48, 3/4" WS                                    |
| 4115 | 6547.58  | 6486.79 | LOTS 50-51, 1" WS                                  |
| 4116 | 6547.53  | 6481.16 | LOTS 46-47, 1" WS                                  |
| 4117 | 6547.00  | 6427.56 | LOT 52, 3/4" WS                                    |
| 4118 | 6542.15  | 6395.72 | LOTS 44-45, 1" WS                                  |
| 4119 | 6543.75  | 6372.32 | LOTS 53-54, 1" WS                                  |
| 4120 | 6539.70  | 6349.43 | LOT 43, 3/4" WS                                    |
| 4121 | 6532.96  | 6319.33 | LOT 42, 3/4" WS                                    |
| 4122 | 6529.68  | 6300.36 | LOTS 40-41, 1" WS                                  |
| 4123 | 6524.37  | 6295.09 | LOT 39, 3/4" WS                                    |
| 4124 | 6444.79  | 6295.09 | LOTS 37-38, 1" WS                                  |
| 4125 | 6702.68  | 6297.58 | LOT 36, 3/4" WS                                    |
| 4126 | 6727.98  | 6302.19 | LOT 35, 3/4" WS                                    |
| 4127 | 6718.98  | 6315.82 | LOTS 32-37, 1" WS                                  |
| 4128 | 810.38   | 6360.20 | LOTS 29-30, 1" WS                                  |
| 4129 | 803.99   | 6415.20 | LOT 28, 3/4" WS                                    |
| 4130 | 85.15    | 6456.25 | DRIVE AREA, 3/4" WS                                |
| 4131 | 62.26    | 6312.46 | LOTS 34-35, 1" WS                                  |
| 4132 | 52.50    | 6294.02 | LOTS 31, 32, 33, 1" WS                             |
| 4133 | 91.46    | 6609.48 | LOTS 11-12, 1" WS                                  |
| 4134 | 72.47    | 6668.48 | LOTS 16-17, 1" WS                                  |
| 4135 | 1.96     | 6636.95 | LOT 15, 3/4" WS                                    |
| 4136 | 5.34     | 6640.26 | LOTS 13-14, 1" WS                                  |



**CIELITO LINDO DE TUBAC  
LOTS 1-57  
WATER PLAN**

**RS Engineering**  
Consulting Engineers

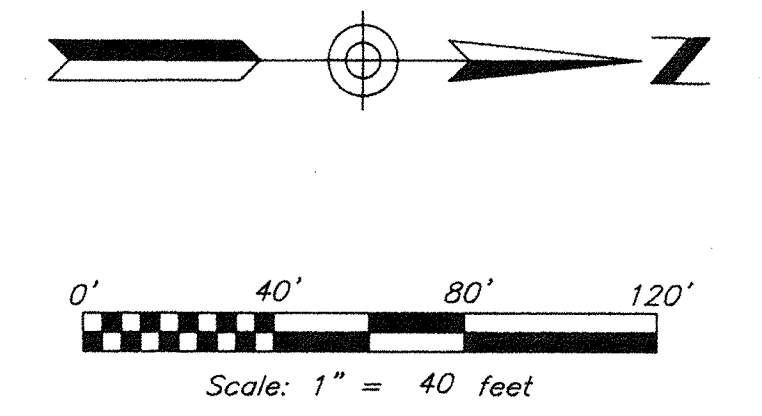
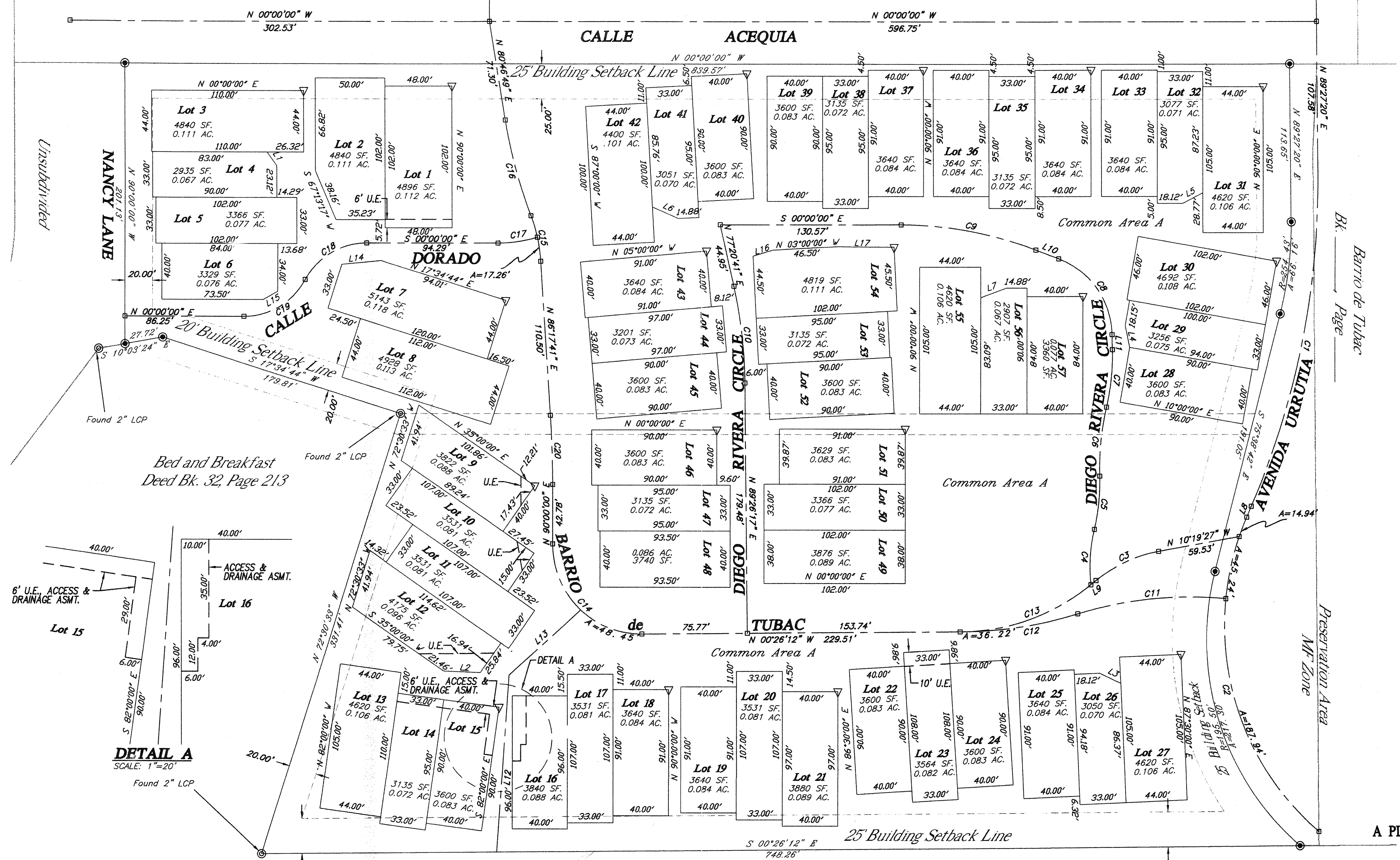
595 SOUTH MEYER AVENUE, TUCSON, ARIZONA 85701 (520) 791-3933

DRAWING NO. 8-13-97  
DATE 8-13-97  
BY DCA  
CHECKED RCP  
SCALE 1"=40'

2207

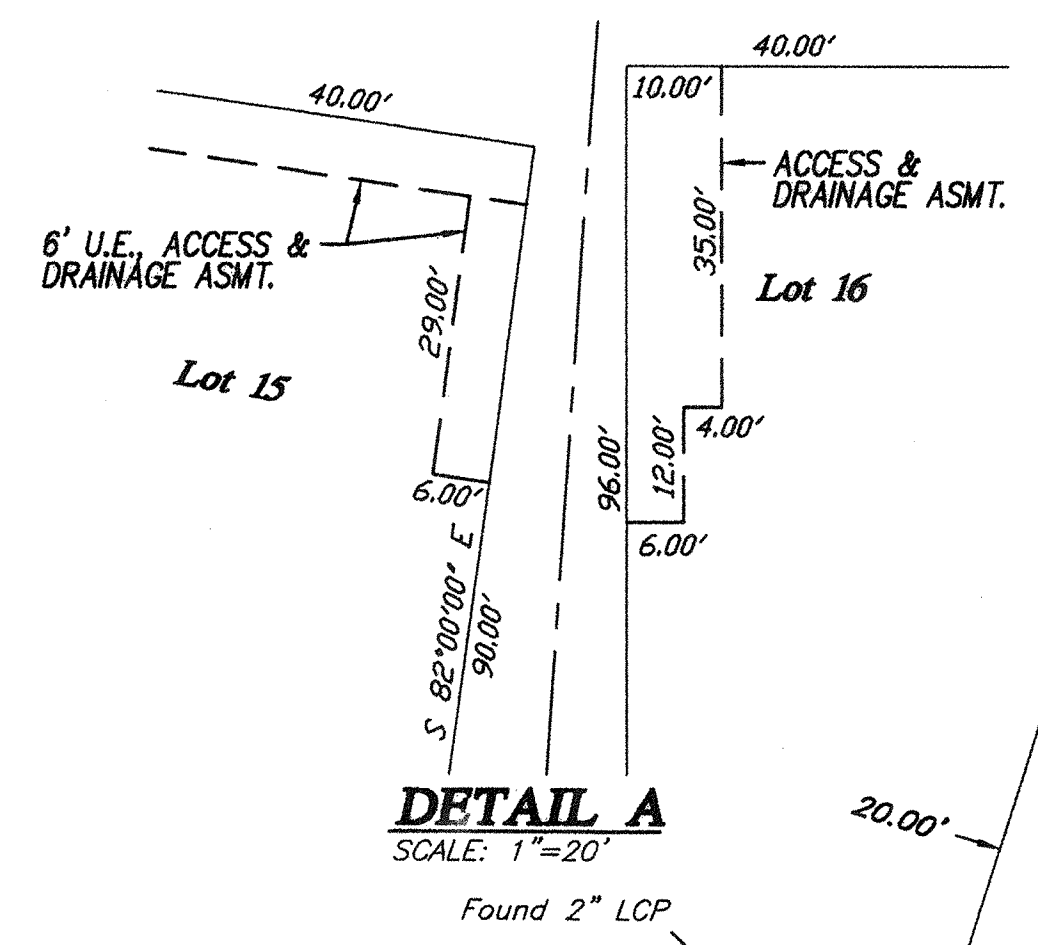
Block 7  
Barrio de Tubac  
Bk. Page B-Z Zone

Common Area B  
Barrio de Tubac  
Bk. Page B-Z Zone



All ties are from the Northwest Lot corner to the Southeast block corner "Z".

| LOT# | BEARING       | DISTANCE |
|------|---------------|----------|
| L1   | S 76°04'41" E | 567.42'  |
| L3   | S 86°50'24" E | 548.21'  |
| L7   | N 66°11'29" W | 433.98'  |
| L9   | S 53°20'46" E | 328.73'  |
| L15  | S 31°45'29" E | 200.26'  |
| L18  | S 21°58'57" E | 315.82'  |
| L21  | S 15°44'06" E | 430.74'  |
| L24  | S 14°35'44" E | 553.57'  |
| L27  | S 12°14'15" E | 676.75'  |
| L30  | S 30°11'12" E | 845.56'  |
| L31  | S 37°21'14" E | 907.23'  |
| L34  | S 43°18'19" E | 820.04'  |
| L37  | S 49°43'21" E | 737.23'  |
| L40  | S 58°02'43" E | 659.79'  |
| L43  | S 63°30'25" E | 537.98'  |
| L46  | S 67°54'00" E | 447.07'  |
| L51  | S 73°20'30" E | 554.86'  |
| L54  | S 77°42'39" E | 629.85'  |
| L57  | S 81°05'59" E | 713.64'  |



| CURVE# | RADIUS  | LENGTH  | CHORD   | CHORD BEARING | DELTA ANGLE | TANGENT |
|--------|---------|---------|---------|---------------|-------------|---------|
| C1     | 589.90' | 246.81' | 245.01' | S 78°33'30" E | 66°01'40"   | 125.24' |
| C2     | 194.02' | 248.12' | 231.55' | N 76°47'33" E | 16°43'46"   | 144.28' |
| C3     | 100.21' | 49.84'  | 49.33'  | N 24°34'25" W | 61°30'04"   | 25.45'  |
| C4     | 118.56' | 39.70'  | 39.51'  | S 86°25'23" E | 20°04'      | 20.04'  |
| C5     | 150.00' | 38.69'  | 38.58'  | S 84°13'09" E | 75°13'23"   | 19.45'  |
| C6     | 200.00' | 50.24'  | 50.11'  | S 84°24'41" E | 75°36'26"   | 25.25'  |
| C7     | 167.93' | 41.56'  | 41.46'  | S 84°18'20" E | 75°49'08"   | 20.89'  |
| C8     | 59.58'  | 70.45'  | 66.42'  | N 54°43'44" E | 22°15'01"   | 40.00'  |
| C9     | 271.71' | 98.89'  | 98.35'  | N 10°25'37" E | 69°08'46"   | 50.00'  |
| C10    | 330.42' | 69.74'  | 69.61'  | N 87°32'29" E | 67°54'24"   | 35.00'  |
| C11    | 280.00' | 108.02' | 107.35' | N 05°42'01" W | 67°53'44"   | 54.69'  |
| C12    | 300.00' | 85.43'  | 85.14'  | S 08°35'40" E | 73°41'03"   | 43.01'  |
| C13    | 151.15' | 101.26' | 99.38'  | S 19°37'47" E | 51°36'49"   | 52.61'  |
| C14    | 64.00'  | 101.02' | 90.85'  | S 44°46'54" W | 359°33'48"  | 64.49'  |
| C15    | 111.38' | 33.35'  | 33.22'  | N 77°43'02" E | 72°50'43"   | 16.80'  |
| C16    | 351.31' | 71.38'  | 71.26'  | N 74°57'34" E | 78°21'30"   | 36.81'  |
| C17    | 100.00' | 28.92'  | 28.82'  | S 08°17'05" E | 73°25'49"   | 14.56'  |
| C18    | 50.00'  | 53.82'  | 51.26'  | N 30°50'20" W | 61°40'41"   | 29.85'  |
| C19    | 50.00'  | 53.82'  | 51.26'  | S 30°50'20" E | 61°40'41"   | 29.85'  |
| C20    | 772.90' | 49.98'  | 49.97'  | N 88°08'51" E | 86°17'41"   | 25.00'  |

| LINE# | BEARING       | DISTANCE |
|-------|---------------|----------|
| L1    | N 54°40'58" E | 12.11'   |
| L2    | N 02°31'39" E | 26.37'   |
| L3    | N 25°11'28" E | 16.80'   |
| L4    | S 78°02'23" W | 16.01'   |
| L5    | N 27°35'11" W | 16.79'   |
| L6    | S 24°01'24" W | 20.34'   |
| L7    | N 20°53'16" W | 18.39'   |
| L8    | S 66°34'20" E | 8.47'    |
| L9    | S 38°49'23" E | 4.65'    |
| L10   | S 20°51'14" W | 17.54'   |
| L11   | N 88°56'14" W | 10.71'   |
| L12   | N 86°00'00" W | 127.62'  |
| L13   | N 41°50'14" W | 69.84'   |
| L14   | N 05°21'28" W | 28.23'   |
| L15   | N 29°44'42" W | 12.09'   |
| L16   | N 16°54'14" W | 14.93'   |
| L17   | N 00°29'22" E | 41.08'   |

A PLANNED AREA DEVELOPMENT  
FINAL PLAT  
FOR  
**CIELITO LINDO  
DE TUBAC**  
LOTS 1-57 AND COMMON AREA 'A'

A RESUBDIVISION OF BLOCK 10 OF BARRIO DE TUBAC,  
A SUBDIVISION OF A PORTION OF BACA FLOAT No.3, SANTA  
CRUZ COUNTY, ARIZONA.

**RS Engineering**  
Consulting Engineers  
885 SOUTH MEYER AVENUE, TUCSON, ARIZONA 85701 (520) 791-3933  
SHT. 2 OF 2 S-6-96

Use or alteration of the information in this instrument for other than the specific purpose for which it was intended and for other than the client for whom it was prepared is forbidden unless expressly permitted in writing in advance by R.S. ENGINEERING INCORPORATED, and R.S. ENGINEERING INCORPORATED shall have no liability to any use of this information without their written consent. © RS ENGINEERING

**CERTIFICATION OF ENGINEERING**

I HEREBY CERTIFY THAT THE ENGINEERING WORK EFFORT, INCLUDING GEOMETRIC DESIGN AND DETERMINATION OF WATER SURFACE ELEVATION, ON THIS PLAT WAS DONE BY ME OR UNDER MY SUPERVISION.

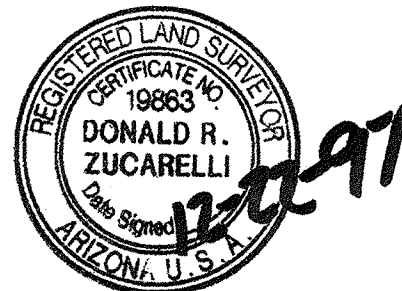
*David Anderson*  
DAVID ANDERSON, P.E., REG. NO. 8770 DATE



**CERTIFICATION OF SURVEY**

I HEREBY CERTIFY THAT THIS PLAT REPRESENTS A SURVEY MADE BY ME OR UNDER MY SUPERVISION, AND THAT ALL BOUNDARY MONUMENTS INDICATED HEREON ACTUALLY EXIST, AND THEIR LOCATION, SIZE AND MATERIAL ARE CORRECTLY SHOWN.

*Donald R. Zucarelli*  
DONALD R. ZUCARELLI, R.L.S., REG. NO. 19863 DATE



**DEDICATION**

WE, THE UNDERSIGNED, HEREBY WARRANT THAT WE ARE ALL AND THE ONLY PARTIES HAVING ANY RECORD TITLE INTEREST IN THE PROPERTY SHOWN ON THIS PLAT, AND WE CONSENT TO THE SUBDIVISION OF SAID PROPERTY IN THE MANNER SHOWN HEREON.

WE, THE UNDERSIGNED, DO HEREBY HOLD HARMLESS SANTA CRUZ COUNTY ITS SUCCESSORS, ASSIGNS, THEIR EMPLOYEES, OFFICERS AND AGENTS FROM ANY AND ALL CLAIMS FOR DAMAGES RELATED TO THE USE OF THE PROPERTY DEPICTED ON THIS PLAT NOW AND IN THE FUTURE BY REASON OF FLOODING, FLOWAGE, EROSION, OR DAMAGE CAUSED BY WATER, WHETHER SURFACE, FLOOD, OR RAINFALL.

PRIVATE STREETS, DRAINAGEWAYS, AND COMMON AREAS, AS SHOWN HEREON, ARE RESERVED FOR THE PRIVATE USE AND CONVENIENCE OF ALL OWNERS OF PROPERTY WITHIN THIS SUBDIVISION AND ARE GRANTED AS EASEMENTS TO THE PUBLIC AND ALL UTILITY COMPANIES FOR THE PURPOSE OF ACCESS, INSTALLATION, AND MAINTENANCE OF UTILITIES, SEWERS AND DRAINAGE. TITLE TO THE LAND OF ALL PRIVATE STREETS, DRAINAGEWAYS, AND COMMON AREAS SHALL BE VESTED IN AN ASSOCIATION OF INDIVIDUAL LOT OWNERS AS ESTABLISHED BY COVENANTS, CONDITIONS AND RESTRICTIONS RECORDED IN DOCKET \_\_\_\_\_ AT PAGES \_\_\_\_\_ THROUGH \_\_\_\_\_ IN THE OFFICE OF THE SANTA CRUZ COUNTY RECORDER. THE ASSOCIATION WILL ACCEPT RESPONSIBILITY FOR CONTROL, MAINTENANCE, AND LIABILITY FOR THE PRIVATE STREETS, DRAINAGEWAYS, AND COMMON AREAS WITHIN THIS SUBDIVISION. PRIVATE SEWER LINES LOCATED BETWEEN THE PRIVATE DWELLINGS AND THE INTERCEPTOR TANKS SHALL BE MAINTAINED BY THE LOT OWNERS AND BY THE ASSOCIATION AS SET FORTH IN THE RECORDED COVENANTS.

Lawyers Title of Arizona, Inc., as Trustee under Trust Agreement No. 7855-T \*, and not otherwise.

By *[Signature]*, Trust Officer

\* Pursuant to Section 33-401, ARS, the name and address of the beneficiary as disclosed by said Trust is as follows:

Baca Float Land Development Limited Partnership, an Arizona Corporation  
P.O. Box 4241  
Tubac, Arizona 85640

**ACKNOWLEDGEMENT**

STATE OF ARIZONA )  
COUNTY OF PIMA )SS

THE FOREGOING INSTRUMENT WAS ACKNOWLEDGED BEFORE ME THIS 21 DAY OF JAN, 1998, BY Jaye M. Proctor OF LAWYERS TITLE DEAR, INC., ON BEHALF OF THE CORPORATIONS AND NOT OTHERWISE.

MY COMMISSION: DORIS J. CLARK  
NOTARY PUBLIC - ARIZONA  
PIMA COUNTY  
MY COM. EXPIRES DEC. 31, 2000

*Doris J. Clark*  
NOTARY PUBLIC

**RECORDING**

STATE OF ARIZONA )  
COUNTY OF SANTA CRUZ )

NO. 9800972  
FEE \$ 42.00

THIS INSTRUMENT WAS FILED FOR RECORD AT THE REQUEST OF RS ENGINEERING ON THIS THE 03<sup>rd</sup> DAY OF February, 1998, IN BOOK 4 OF MAPS AND PLATS AT PAGE 83 THEREOF, AT 3:30 P.M.

*Suzanne Spitz* *Carolina Mejia*  
SANTA CRUZ COUNTY RECORDER DEPUTY COUNTY RECORDER

**APPROVAL**

I, Melinda Meek, CLERK OF SANTA CRUZ COUNTY, ARIZONA, HEREBY CERTIFY THAT THIS PLAT WAS APPROVED BY THE BOARD OF SUPERVISORS OF SANTA CRUZ COUNTY, ARIZONA, ON THIS 3<sup>rd</sup> DAY OF Feb., 1998.

*Melinda Meek* 2/3/98  
CLERK OF THE BOARD DATE

*Diana Filer* 1/27/98  
SANTA CRUZ COUNTY PLANNING DIRECTOR DATE

*[Signature]* 1/27/98  
SANTA CRUZ COUNTY ENGINEER (Acting) DATE

**ASSURANCE**

Assurances in the form of third party trust agreement have been provided to guarantee improvements as required by Santa Cruz County for this subdivision.  
*Melinda Meek* 2/3/98  
CLERK OF THE BOARD DATE

**WATER ADEQUACY**

A CERTIFICATE OF ASSURED WATER SUPPLY HAS BEEN ISSUED BY THE STATE OF ARIZONA DEPARTMENT OF WATER RESOURCES ON THE 18TH DAY OF AUGUST 1997 TO BACA FLOAT WATER CO.

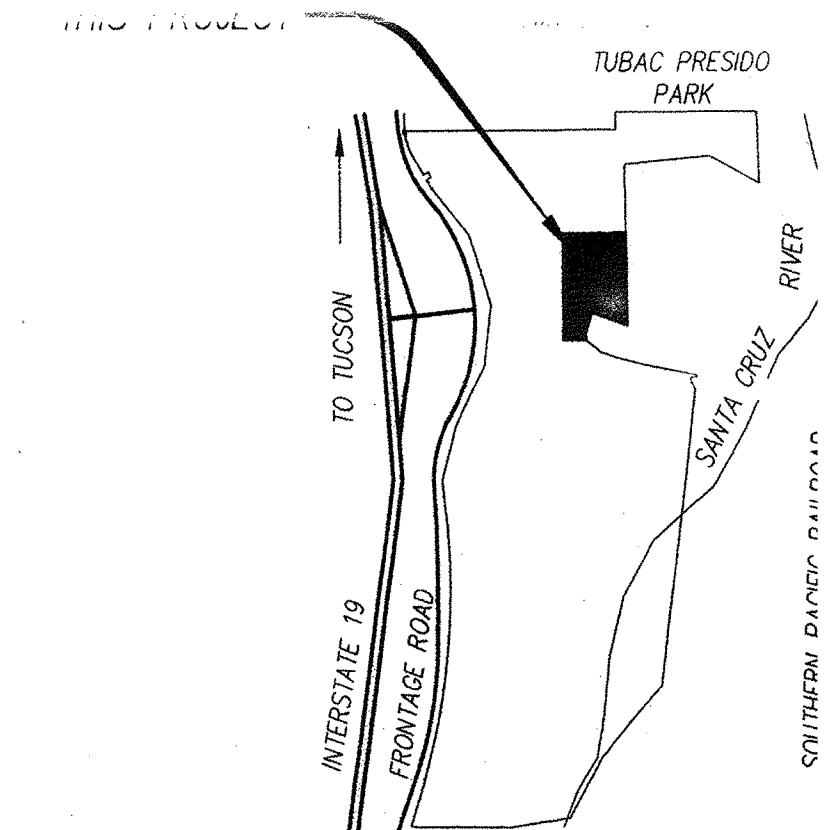
**LEGAL DESCRIPTION**

Commencing at the Northwest corner of Parcel J as recorded in the office of the Santa Cruz Recorder, County of Santa Cruz, State of Arizona;

thence South 00 degrees 00 minutes 00 seconds East (S 00°00'00" E) along the West line of said Parcel J, 23.48 feet to the TRUE POINT OF BEGINNING;

thence North 90 degrees 00 minutes 00 seconds East (N 00°00'00" E), a distance of 124.52 feet;  
thence along a curve to the right having a radius of 200.00 feet, arc length of 48.87 feet, delta angle of 14 degrees 00 minutes 01 seconds (14°00'01"), a chord bearing of South 83 degrees 00 minutes 00 seconds East (S 83°00'00" E), and a chord length of 48.75 feet;  
thence South 76 degrees 00 minutes 00 seconds East (S 76°00'00" E), a distance of 196.71 feet;  
thence along a curve to the left having a radius of 195.50 feet, arc length of 218.62 feet, delta angle of 64 degrees 04 minutes 20 seconds (64°04'20"), a chord bearing of North 71 degrees 57 minutes 50 seconds East (N 71°57'50" E), and a chord length of 207.41 feet to a point on the East line of said Parcel J;  
thence along the boundary of said Parcel J the following six (6) courses:

South 00 degrees 26 minutes 13 seconds East (S 00°26'13" E) along said East line, a distance of 747.70 feet;  
thence North 72 degrees 30 minutes 28 seconds West (N 72°30'28" W), a distance of 331.42 feet;  
thence South 17 degrees 34 minutes 44 seconds West (S 17°34'44" W), a distance of 179.81 feet;  
thence South 10 degrees 03 minutes 22 seconds East (S 10°03'22" E), a distance of 27.72 feet;  
thence North 90 degrees 00 minutes 00 seconds West (N 90°00'00" W), a distance of 201.13 feet;  
thence North 00 degrees 00 minutes 00 seconds West (N 00°00'00" W), a distance of 836.09 feet to the true point of beginning. Said parcel contains 9.284 acres more or less.



**Location Plan**  
A PORTION OF BACA FLOAT N SANTA CRUZ COUNTY, ARIZONA

**GENERAL NOTES**

1. THE GROSS AREA OF THIS SUBDIVISION IS 9.284 ACR.
2. THE TOTAL NUMBER OF BLOCKS IS 57.
3. TOTAL MILES OF NEW PUBLIC STREETS IS 0. TOTAL MILES OF NEW PRIVATE STREETS IS 0.36.
4. THE HOMEOWNER'S ASSOCIATION SHALL BE RESPONSIBLE FOR THE OPERATION, MAINTENANCE, AND LIABILITY FOR DRAINAGE STRUCTURES INSTALLED ON THE PROPERTY.
5. THERE WILL BE NO FURTHER DIVISION OF LOTS WITHO EXPRESSED APPROVAL OF SANTA CRUZ COUNTY BOARD OF SUPERVISORS.
6. TUBAC FIRE PROTECTION DISTRICT SERVES THIS AREA.
7. THE BASIS OF BEARING: ADOT MONUMENTS AT STATION RIGHT OF S.B. CENTERLINE 1150+00 AND 490' RIGHT CENTERLINE 1150+60, PROJECT No. I-19-1(28), DRAWING No. D-12-T-325, SHEET 9 OF 26, BEARING = N39°.
8. BASIS OF ELEVATION: ADOT MONUMENT AT STATION S.B. CENTERLINE, PROJECT No. I-19-1(28), SAID MONUMENT LOCATED 35± SOUTHEASTERLY FROM THE SOUTHWEST CORNER OF BLOCK 5 SHOWN HEREON, SAID ELEVATION BEING 3217.00.
9. CONDITIONS, COVENANTS AND RESTRICTIONS ARE RECORDED IN DOCKET \_\_\_\_\_, PAGE \_\_\_\_\_.
10. WASTEWATER TREATMENT TO BE DONE AT THE CONSTRUCTION WETLANDS TO BE CONSTRUCTED WITH THIS PROJECT.
11. WATER TO BE SUPPLIED BY BACA FLOAT WATER CO. ELECTRICITY AND GAS SERVICE SUPPLIED BY CITIZEN UTILITIES. SOLID WASTE DISPOSAL IS THE SANTA CRUZ LANDFILL, TUBAC, ARIZONA.
12. OWNERS OF LOTS ARE HEREBY NOTIFIED THAT THE RECORDED COVENANTS FOR THIS PROPERTY ESTABLISH CERTAIN EASEMENTS AND RIGHTS OF INGRESS AND EGRESS OVER AND ACROSS THE PRIVATE DRIVEWAYS AND PAVED PARKING SURFACES OF VARIOUS LOTS. SUCH EASEMENTS ARE FOR THE BENEFITS OF CERTAIN ADJACENT OR NEARBY LOTS AS MORE SPECIFICALLY SET FORTH IN THE COVENANTS.

**A PLANNED AREA DEVELOPMENT  
FINAL PLAT  
FOR  
CIELITO LINDO  
DE TUBAC  
LOTS 1-57 AND COMMON AREA 'A'**

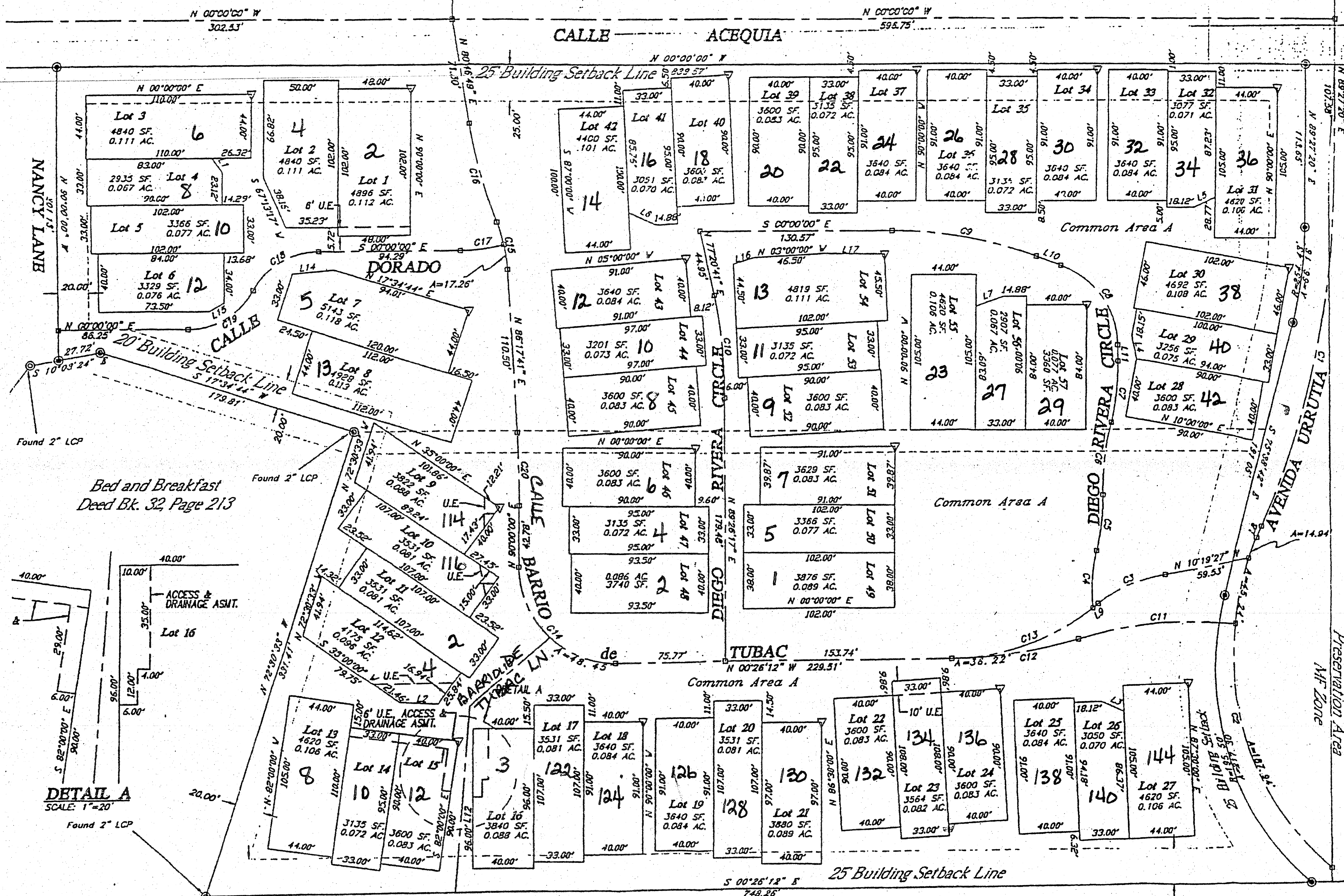
A RESUBDIVISION OF BLOCK 10 OF BARRIO DE TUBAC, A SUBDIVISION OF A PORTION OF BACA FLOAT No. 3, SANTA CRUZ COUNTY, ARIZONA.

**LEGEND**

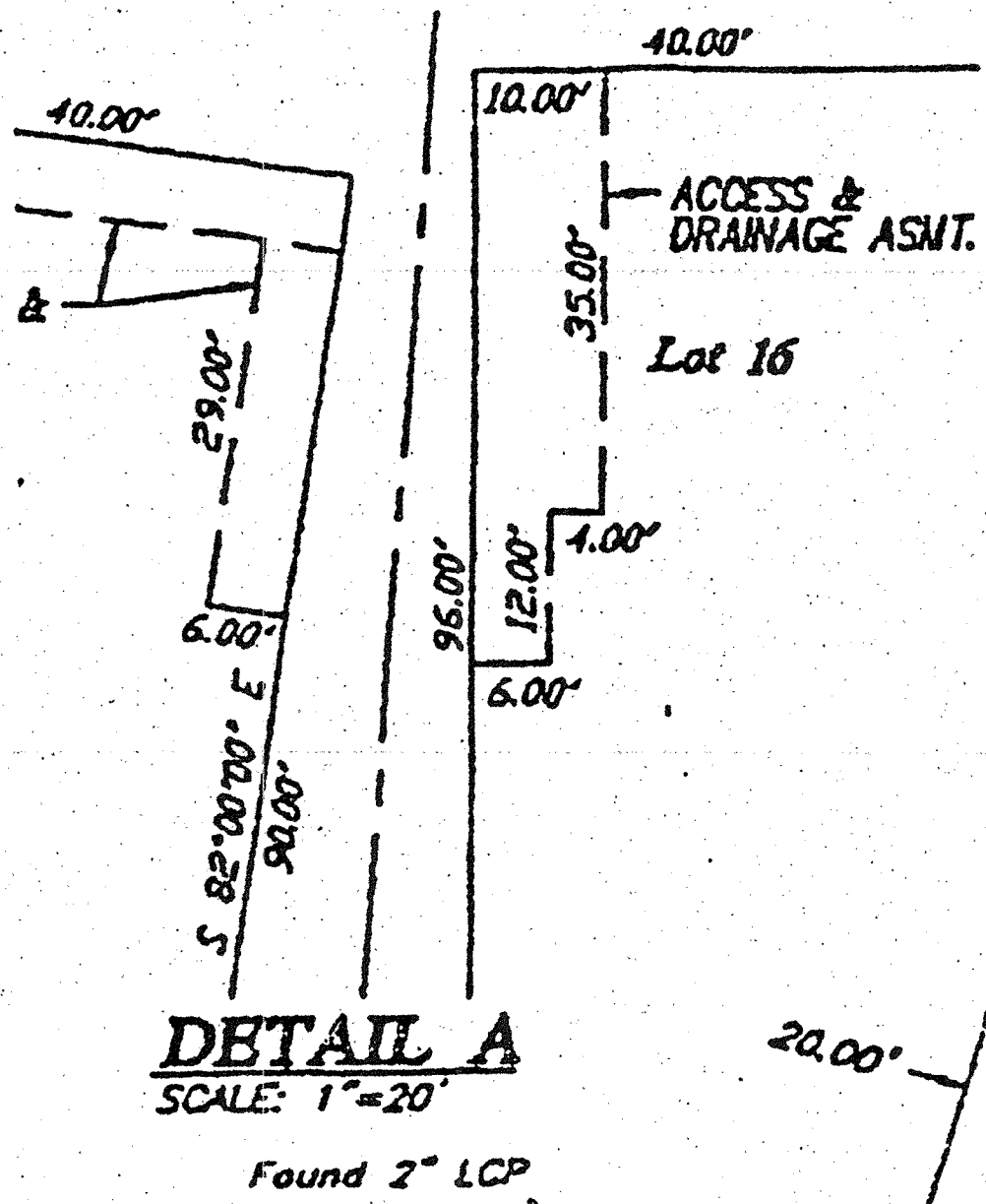
- A 2" BRASS DISC SURVEY MONUMENT IN CONCRETE STAMPED R.L.S. 19863, SET
- FOUND SURVEY MONUMENT (ACP, BRASS CAP, ETC.) AS NOTED
- A 1/2" IRON PIN, LEAD & TAG OR '+' IN CONCRETE TAGGED R.L.S. 19863, SET.
- PROPERTY BOUNDARY

Use or alteration of the information in this instrument for other than the specific purpose for which it was intended and for other than the client for whom it was prepared is forbidden unless expressly permitted in writing in advance by R.S. ENGINEERING INCORPORATED, and R.S. ENGINEERING INCORPORATED shall have no liability to any use of this information without their written consent. © RS ENGINEERING

**RS Engineerin**  
Consulting Engineer  
595 SOUTH MEYER AVENUE, TUCSON, ARIZONA 85701 (520) 791-  
SHT. 1 OF 2 S-6-96

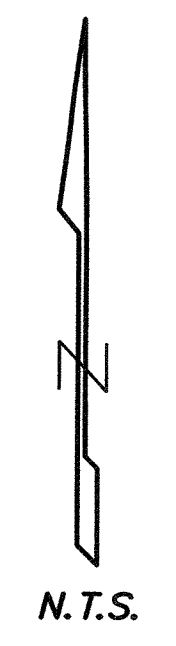


Bed and Breakfast Deed Bk. 32 Page 213



# H.O.A. EXHIBIT

## FOR CIELITO LINDO DE TUBAC



### LEGEND

Subdivision H.O.A.

*Handwritten notes:*  
 2.5' by 10' lot  
 7' x 10' lot  
 10' x 10' lot  
 10' x 10' lot

|  |                            |                        |                                |
|--|----------------------------|------------------------|--------------------------------|
| <b>ALLIANCE LAND SURVEYING, LLC</b>  |                            |                        |                                |
| <small>Professional Land Surveyors in Arizona<br/>7900 N. 70th Avenue Suite 104, Glendale, Arizona 85303<br/>Phone (623) 972-2200 Fax (623) 972-1616</small> |                            |                        |                                |
| <b>H.O.A. EXHIBIT</b>  |                            |                        |                                |
| FOR CIELITO LINDO DE TUBAC   |                            |                        |                                |
| <small>REVISIONS</small>   |                            | <small>DWN: HW</small> | <small>SHEET 1 OF 1</small>    |
| <small>DATE</small>  | <small>DESCRIPTION</small> | <small>CHK: BG</small> | <small>DATE: 3/4/08</small>    |
|  |                            |                        | <small>JOB NO.: 080120</small> |